



GRAND MARINA

THE
LEGACY
COLLECTION

COVE



JW MARRIOTT

RESIDENCES

GRAND MARINA SAIGON



A GLOBAL LANDMARK A NATION'S ICON

Superlative comfort and class await at The Legacy Collection's Cove.

Rising 47 floors above the city, this breathtaking new addition to the skyline commands unrivalled views of the Saigon River and the Botanical and Zoological Gardens.

Cove offers a variety of residence choices, each finished to immaculate perfection, with luxe materials and generous open-plan design.

For the exclusive use of residents, Cove offers private facilities such as a theatre, library lounge, children's room, bar, living room and boardroom. The building also has its own luxury Fitness Centre with a private gym, lap pool and yoga room.

As with all homes in The Legacy Collection, Cove provides owners with the consummate residential services of JW Marriott.

BEYOND COMPARE

Managed by JW Marriott, homes at Legacy Cove offer a lifestyle of sublime comfort and prestige. Every exquisite home in The Legacy Collection features JW Marriott's impeccable residential services, alongside world-class leisure amenities complemented by an extensive array of included and à-la-carte services, imbuing every aspect of life with effortless luxury.



LIFE AT LEGACY COVE

Enjoy the tranquility of a refined contemporary haven, discreetly tucked away within Grand Marina, Saigon. Adjacent to Royal Park and with expansive botanical garden and river views, homes at Legacy Cove provide the perfect inner-city retreat, an urban hideaway steps from the waterfront.





A PRIVILEGED POSITION

Located between the Saigon River and the Botanical and Zoological Gardens, Legacy Cove offers quick access to Nguyen Huu Canh Street. The tower sits adjacent to the themed spaces of Royal Park, and links to the waterfront promenade via manicured garden pathways.



Disclaimer: All images of lotus park and elevated walkway in this document are illustrated based on the current materials and are subject to changes and final approval of the authorized government office.

REFINED TRANQUILLITY

Legacy Cove is designed for a lifetime of enjoyment and ease. From private residences to grand common areas, each light-filled and flawlessly finished space exudes a sense of luxurious calm.



EXCELLENCE ON EVERY LEVEL

Legacy Cove features two floors of facilities with a fitness centre, pool, meeting spaces, theatre and more leisure amenities, plus retail spaces on the first and second floors. Car-parking levels are situated underground, accessible via high-speed lifts.



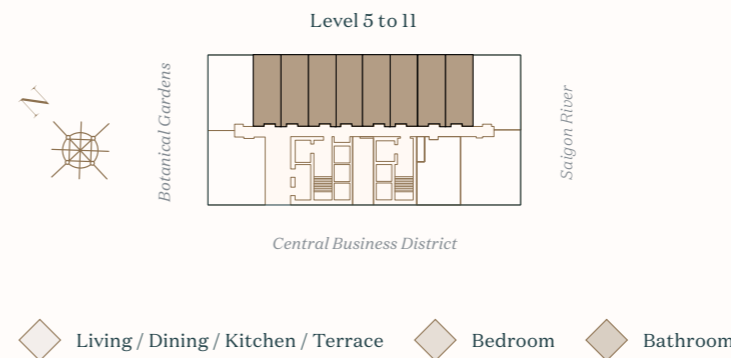
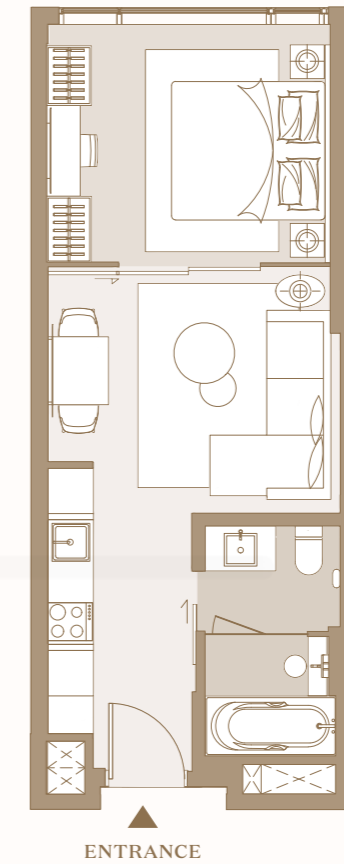
LEGACY COVE

AN ELEGANT PRIVATE REALM



Homes cocoon residents in utmost splendour. Spectacular views of the river and botanical gardens stream in through expansive windows. Light timber floors and earthy tones create a sophisticated yet grounded urban aesthetic.

LEGACY EXCELLENCE SUITE

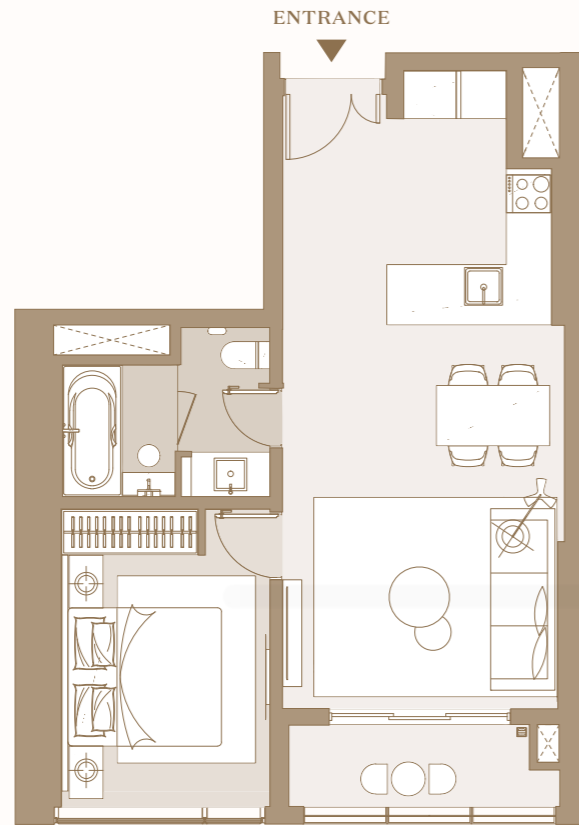


UNIT	NSA	GSA
J.03	37.46 m ²	41.46 m ²
J.04	37.27 m ²	42.26 m ²
J.05	36.78 m ²	41.75 m ²
J.06	36.78 m ²	41.75 m ²
J.07	36.78 m ²	41.75 m ²
J.08	36.78 m ²	41.75 m ²
J.09	37.26 m ²	42.26 m ²
J.10	37.46 m ²	41.46 m ²

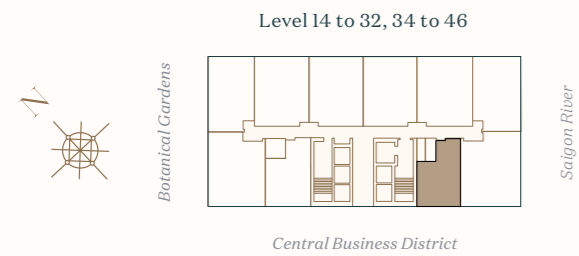
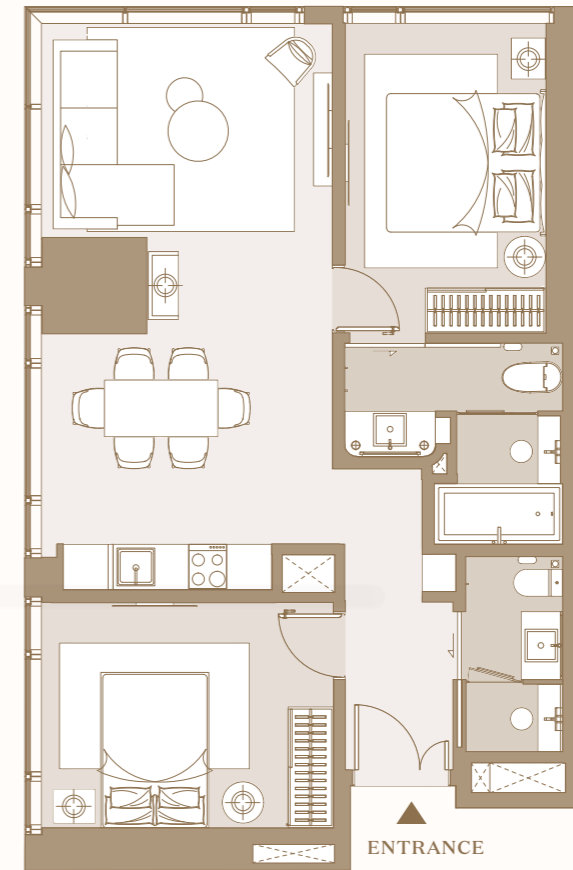
Disclaimer: Whilst every care has been taken to ensure accuracy in the preparation of the information contained herein, no warranties whatsoever are given or legal representation provided in respect thereon. The developer reserves the right to modify information of the development or any part thereof as may be approved or required by the relevant authorities. Name and code of unit in this document are for advertisement. The official name and code of unit will be as per the Sales and Purchase Agreement.

*Note: Final usable area to be verified by surveyor.
 - Net Saleable Area (NSA)
 - Gross Saleable Area (GSA)*

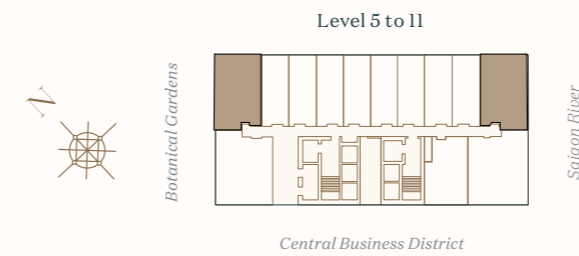
LEGACY SUPERIOR SUITE



LEGACY EXECUTIVE SUITE



UNIT	NSA	GSA
J.10	51.57 - 53.45 m ²	58.54 - 60.19 m ²



UNIT	NSA	GSA
J.02	68.65 m ²	76.51 m ²
J.11	68.65 m ²	76.51 m ²

Living / Dining / Kitchen / Terrace
 Bedroom
 Bathroom

Living / Dining / Kitchen / Terrace
 Bedroom
 Bathroom

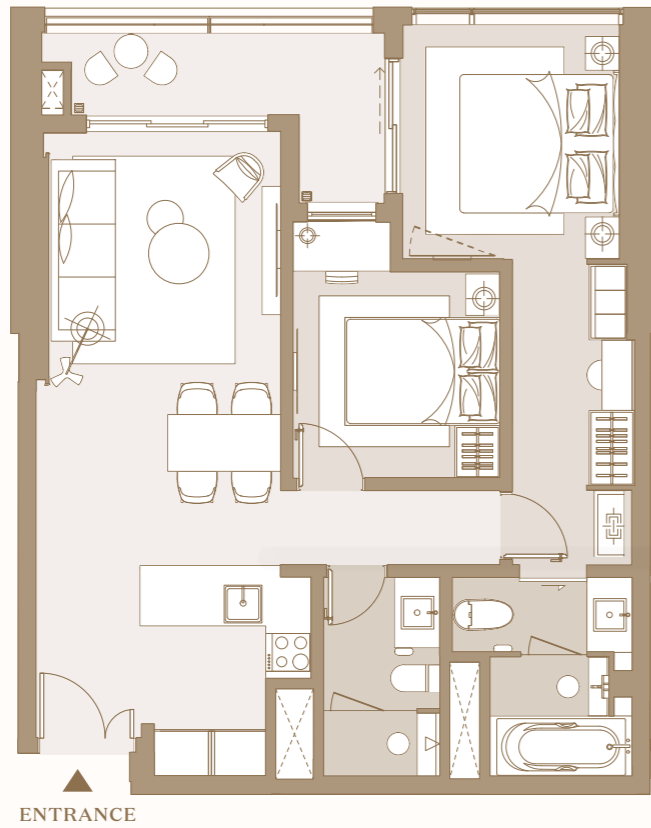
Disclaimer: Whilst every care has been taken to ensure accuracy in the preparation of the information contained herein, no warranties whatsoever are given or legal representation provided in respect thereon. The developer reserves the right to modify information of the development or any part thereof as may be approved or required by the relevant authorities. Name and code of unit in this document are for advertisement. The official name and code of unit will be as per the Sales and Purchase Agreement.

*Note: Final usable area to be verified by surveyor.
 - Net Saleable Area (NSA)
 - Gross Saleable Area (GSA)*

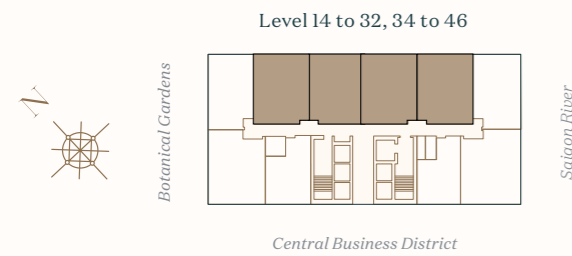
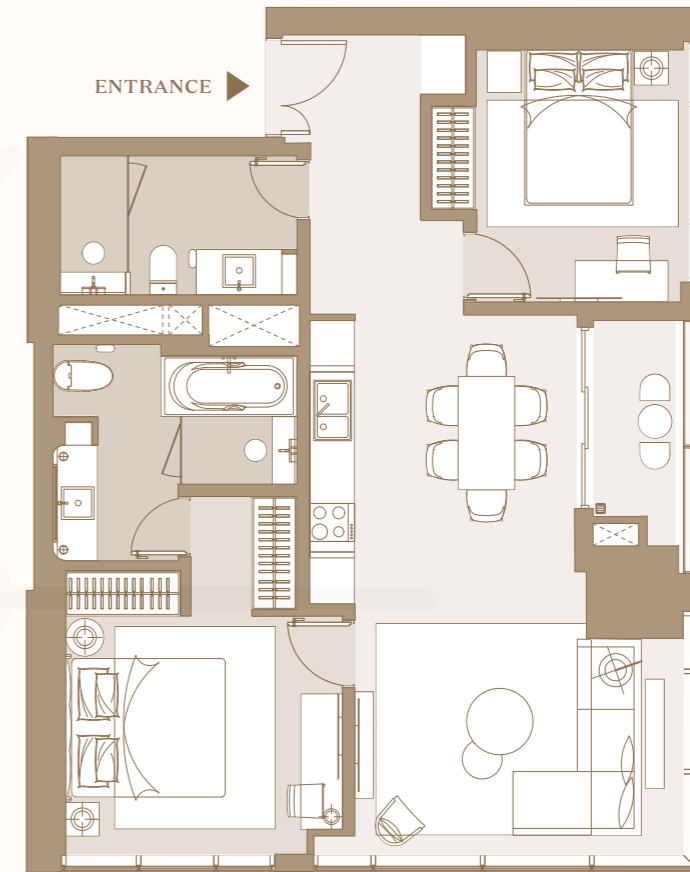
Disclaimer: Whilst every care has been taken to ensure accuracy in the preparation of the information contained herein, no warranties whatsoever are given or legal representation provided in respect thereon. The developer reserves the right to modify information of the development or any part thereof as may be approved or required by the relevant authorities. Name and code of unit in this document are for advertisement. The official name and code of unit will be as per the Sales and Purchase Agreement.

*Note: Final usable area to be verified by surveyor.
 - Net Saleable Area (NSA)
 - Gross Saleable Area (GSA)*

LEGACY EXECUTIVE SUITE



LEGACY EXECUTIVE SUITE

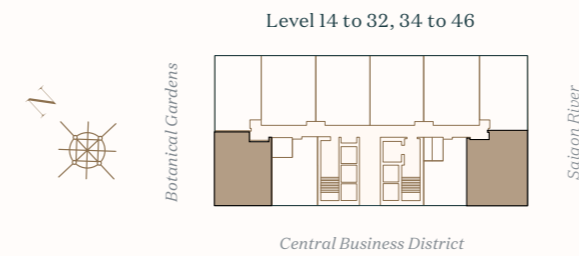


UNIT	NSA	GSA
J.04	74.60 - 75.91 m ²	82.25 - 83.27 m ²
J.05	74.16 - 74.86 m ²	82.20 m ²
J.06	74.16 - 74.86 m ²	82.20 m ²
J.07	74.60 - 75.91 m ²	82.25 - 83.27 m ²

Living / Dining / Kitchen / Terrace
 Bedroom
 Bathroom

Disclaimer: Whilst every care has been taken to ensure accuracy in the preparation of the information contained herein, no warranties whatsoever are given or legal representation provided in respect thereon. The developer reserves the right to modify information of the development or any part thereof as may be approved or required by the relevant authorities. Name and code of unit in this document are for advertisement. The official name and code of unit will be as per the Sales and Purchase Agreement.

*Note: Final usable area to be verified by surveyor.
 - Net Saleable Area (NSA)
 - Gross Saleable Area (GSA)*



UNIT	NSA	GSA
J.02	80.20 - 81.46 m ²	90.36 - 90.37 m ²
J.09	80.20 - 81.46 m ²	90.36 - 90.37 m ²

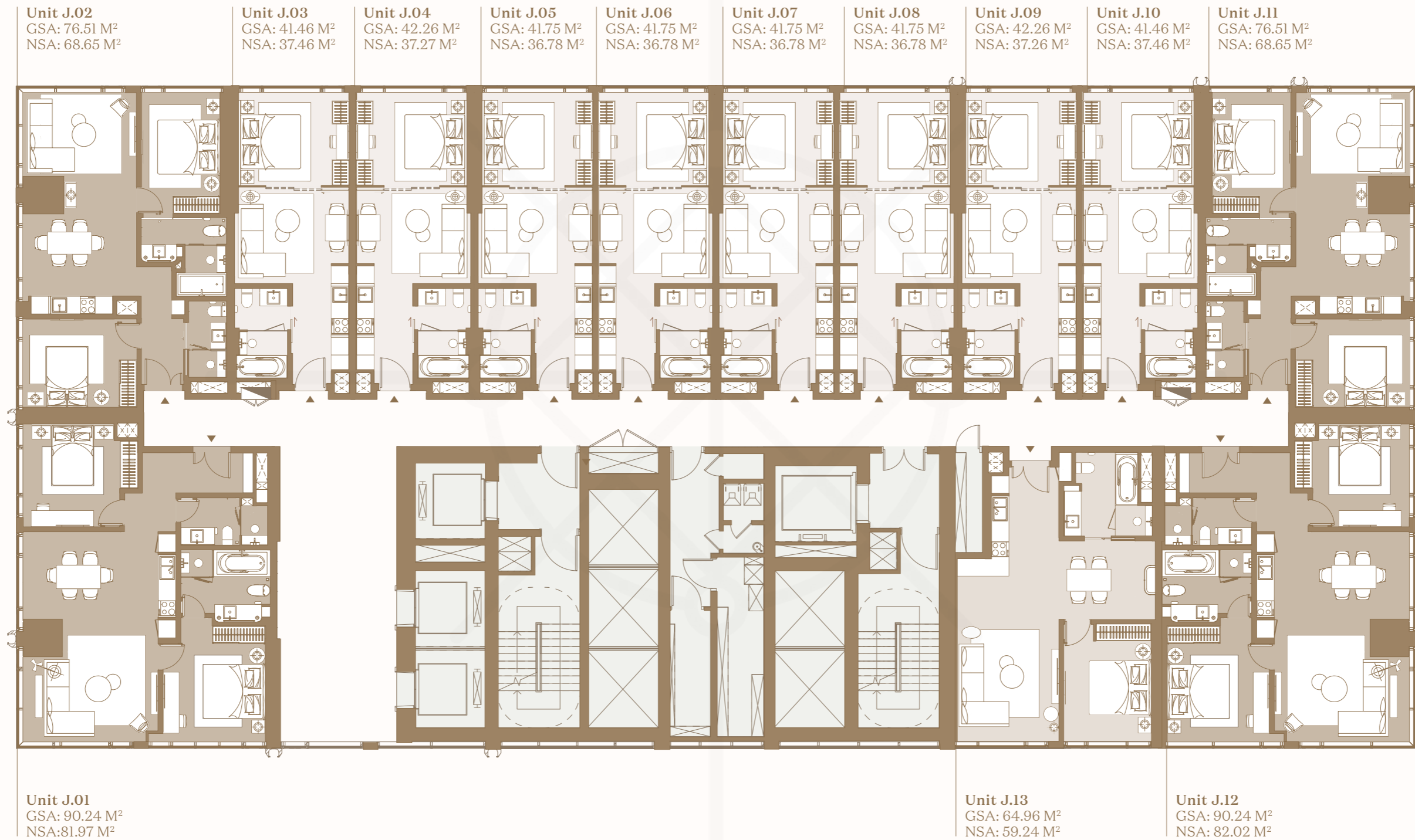
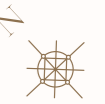
Living / Dining / Kitchen / Terrace
 Bedroom
 Bathroom

Disclaimer: Whilst every care has been taken to ensure accuracy in the preparation of the information contained herein, no warranties whatsoever are given or legal representation provided in respect thereon. The developer reserves the right to modify information of the development or any part thereof as may be approved or required by the relevant authorities. Name and code of unit in this document are for advertisement. The official name and code of unit will be as per the Sales and Purchase Agreement.

*Note: Final usable area to be verified by surveyor.
 - Net Saleable Area (NSA)
 - Gross Saleable Area (GSA)*

LEGACY COVE TYPICAL FLOOR PLAN

LEVEL 5 TO 11



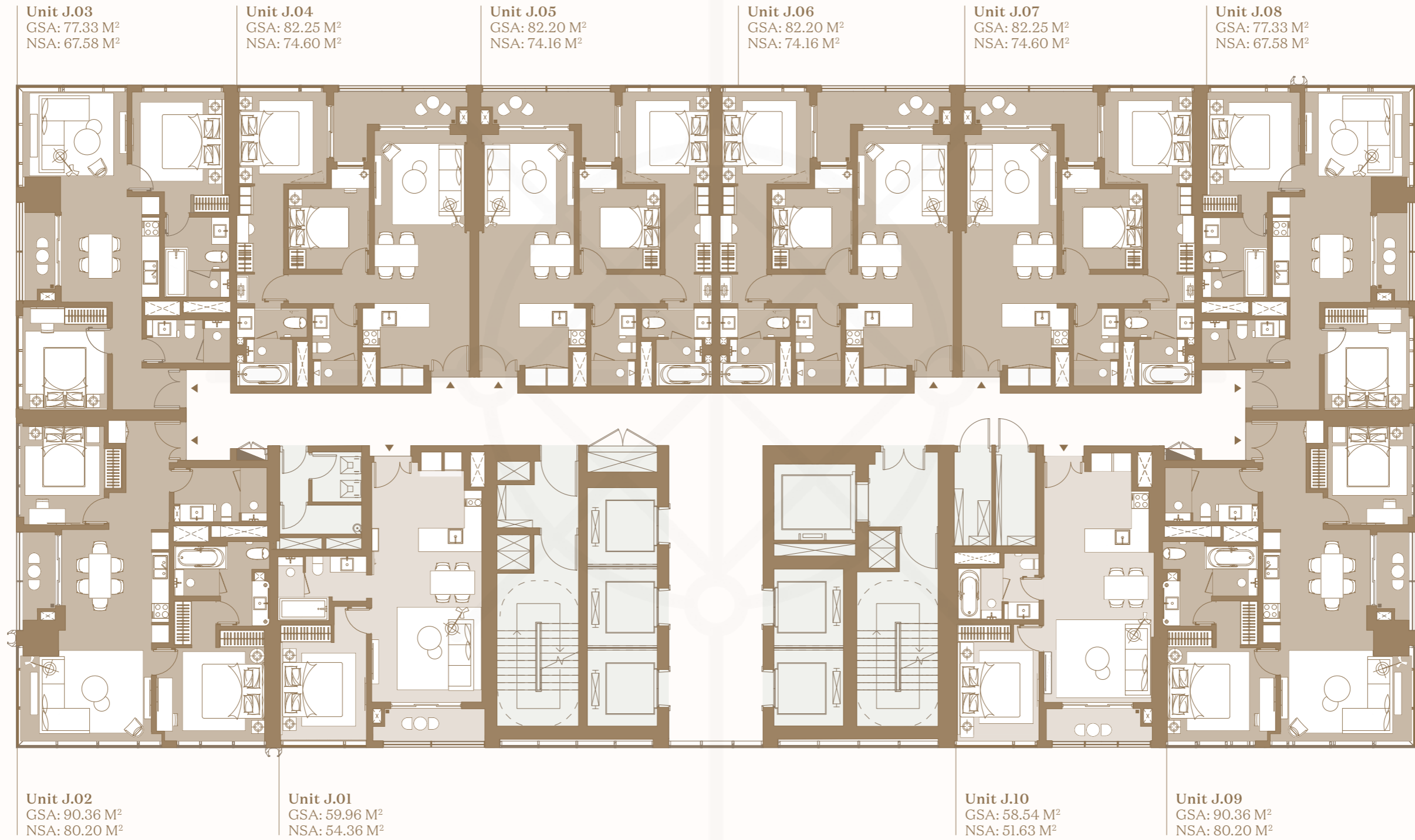
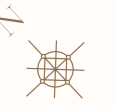
- Studio Room
Legacy Excellence Suite
- 1 Bedroom
Legacy Superior Suite
- 2 Bedroom
Legacy Executive Suite
- Dual-key Room
Legacy Family Suite

Disclaimer: Whilst every care has been taken to ensure accuracy in the preparation of the information contained herein, no warranties whatsoever are given or legal representation provided in respect thereon. The developer reserves the right to modify information of the development or any part thereof as may be approved or required by the relevant authorities. Name and code of unit in this document are for advertisement. The official name and code of unit will be as per the Sales and Purchase Agreement.

*Note: Final usable area to be verified by surveyor.
- Net Saleable Area (NSA)
- Gross Saleable Area (GSA)*

LEGACY COVE TYPICAL FLOOR PLAN

LEVEL 14 TO 32, 34 TO 46



- Studio Room
Legacy Excellence Suite
- 1 Bedroom
Legacy Superior Suite
- 2 Bedroom
Legacy Executive Suite
- Dual-key Room
Legacy Family Suite

Disclaimer: Whilst every care has been taken to ensure accuracy in the preparation of the information contained herein, no warranties whatsoever are given or legal representation provided in respect thereon. The developer reserves the right to modify information of the development or any part thereof as may be approved or required by the relevant authorities. Name and code of unit in this document are for advertisement. The official name and code of unit will be as per the Sales and Purchase Agreement.

*Note: Final usable area to be verified by surveyor.
- Net Saleable Area (NSA)
- Gross Saleable Area (GSA)*



SPECIFICATIONS

Outstanding to the last detail, every residence at Cove Tower is designed to the meticulous standards of JW Marriott. Using premium branded appliances and fixtures, fine interiors are crafted for a lifetime of opulent comfort.

Floor Finishes	<ul style="list-style-type: none"> • Bathroom – marble • Kitchen / Dining – granite
Wall Finishes	Bathroom – marble
Doors	Digital door lock – access type: key pass, fingerprint lock, mechanical key, card
Sanitary Ware	<ul style="list-style-type: none"> • Wash basin • Water closet • Shower mixer • Wash basin faucets • Toilet fixtures: towel bar, toilet-paper holder, bidet sprayer
Air Conditioner	Centralised chiller system
Kitchen	<ul style="list-style-type: none"> • Induction stove with three hobs • Single/double stainless-steel sink • Sink faucet (with mixer tap) with automatic sensor and extendable hose • Kitchen hood • Oven

Note: Preliminary specifications only. The full specifications list will be detailed in the Sales and Purchase Agreement.



DEVELOPED BY



MASTERISE HOMES

 No.2, Ton Duc Thang Street, Ben Nghe Ward, District 1, Ho Chi Minh City, Vietnam

 (028) 39 159 159  grandmarina@masterisehomes.com  masterisehomes.com/grand-marina-saigon  facebook.com/OfficialGrandMarinaSaigon

Disclaimer: Whilst every care has been taken to ensure accuracy in the preparation of the information contained herein, no warranties whatsoever are given or legal representation provided in respect thereon. The developer reserves the right to modify information of the development or any part thereof as may be approved or required by the relevant authorities.

The JW Marriott Residences, Grand Marina Saigon are not owned, developed or sold by Marriott International, Inc. or its affiliates ("Marriott"). The JW Marriott marks are used under a license from Marriott, which has not confirmed the accuracy of any of the statements or representations made herein. Masterise Homes and its affiliates are responsible for the accuracy of any of the images, statements or representations made herein.