



A GLOBAL LANDMARK A NATION'S ICON

The Prime Collection's Lake tower unveils a new class of contemporary living in District 1.

Part of an ultra-luxury development transforming the riverfront, the 47-storey tower offers immaculately crafted homes with outstanding views over the Saigon Zoological and Botanical Gardens and the lights of Nguyen Huu Canh Street.

Prime Lake features world-class facilities, including a private theatre, a children's room, a fitness centre, and stunning open-air pools.

Prime Lake provides homeowners with a life of status and comfort with the consummate services and amenities of Marriott Residences.

THE ULTIMATE ADDRESS

A youthful and dynamic statement of success, The Prime Collection provides Saigon's next-generation elite with homes that reflect their achievements and aspirations. Matching superlative modern design with a full suite of residential services provided by Marriott, homes at Prime Lake assure an effortless urban lifestyle, the very epitome of upscale apartment living in Saigon.



Disclaimer: All images of lotus park and elevated walkway in this document are illustrated based on the current materials and are subject to changes and final approval of the authorized government office.

LIFE AT PRIME LAKE

Tune into the hum of the city at Prime Lake, located at the heart of the Grand Marina, Saigon masterplan. Adjacent to Lotus Plaza, and central to everything the development has to offer, it is ideal for young families and residents seeking a dynamic urban lifestyle. Overlooking the botanical gardens and the river, every home enjoys iconic Saigon view.



Disclaimer: All images of lotus park and elevated walkway in this document are illustrated based on the current materials and are subject to changes and final approval of the authorized government office.



RIVERSIDE SPLENDOUR

Prime Lake enjoys verdant surrounds, opening up to the resplendent Lotus Park, and connected via a covered walkway to Sea tower and its rooftop amenities. A short stroll away is the waterfront park and promenade.



Disclaimer: All images of lotus park and elevated walkway in this document are illustrated based on the current materials and are subject to changes and final approval of the authorized government office.

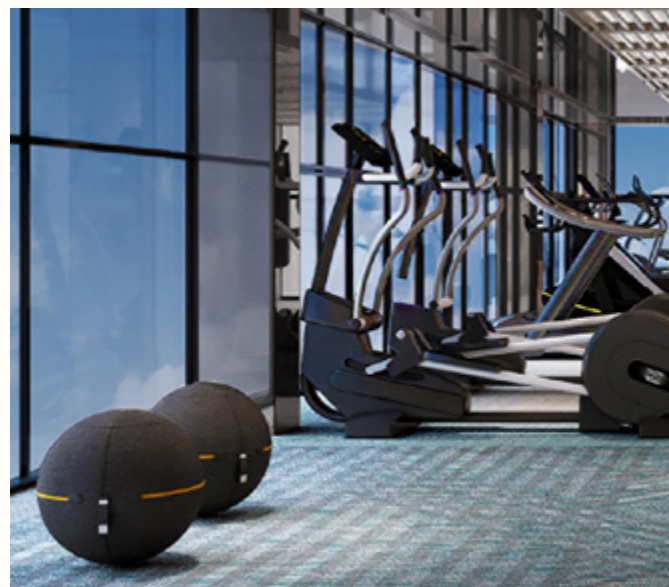
OUTSTANDING DESIGN

Both residences and facilities at Prime Lake feature an exquisite blend of detailed craftsmanship, spacious open-plan design and luxe materials. Light-filled and flawlessly finished, every space immerses residents in calming natural hues, with stunning views from every expansive window.



EXCELLENCE ON EVERY LEVEL

The iconic Prime Lake features shared facilities on the first and top floors. Prime Lake features world-class facilities, including a private theatre, a children's room, a fitness centre, and stunning open-air pools.

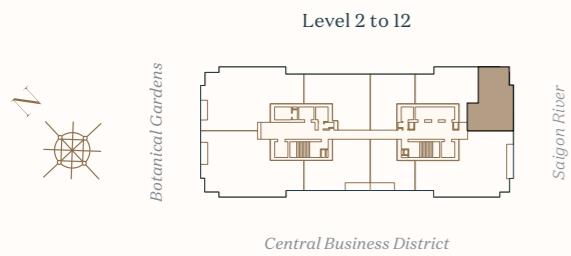
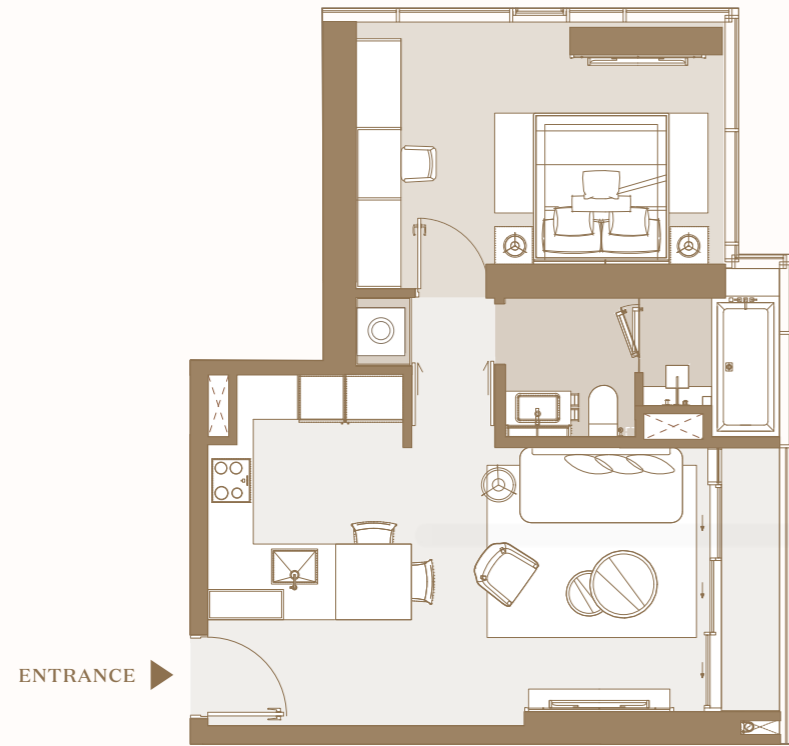


OPULENT DETAILS



Homes at Prime Lake are meticulously finished with high-quality textiles that exude indulgent luxury. Marble bathrooms, plush upholstered bedrooms and gleaming metallics create an air of stylish comfort, both inviting and refined.

PRIME SUPERIOR SUITE



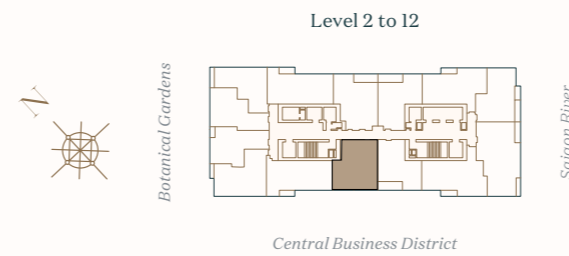
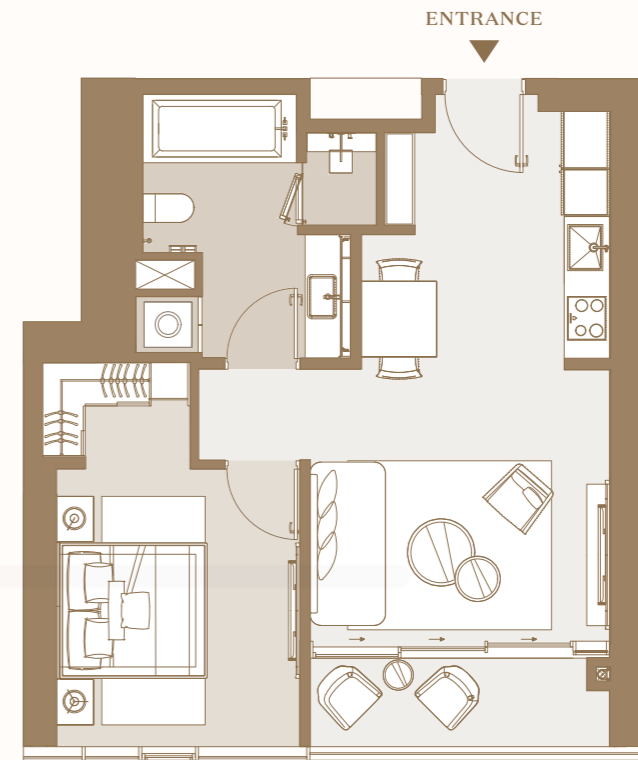
UNIT	NSA	GSA
M.02	56.02 m ²	63.26 m ²

- Living / Dining / Kitchen / Terrace
- Bedroom
- Bathroom

Disclaimer: Whilst every care has been taken to ensure accuracy in the preparation of the information contained herein, no warranties whatsoever are given or legal representation provided in respect thereon. The developer reserves the right to modify information of the development or any part thereof as may be approved or required by the relevant authorities. Name and code of unit in this document are for advertisement. The official name and code of unit will be as per the Sales and Purchase Agreement.

*Note: Final usable area to be verified by surveyor.
 - Net Saleable Area (NSA)
 - Gross Saleable Area (GSA)*

PRIME SUPERIOR SUITE



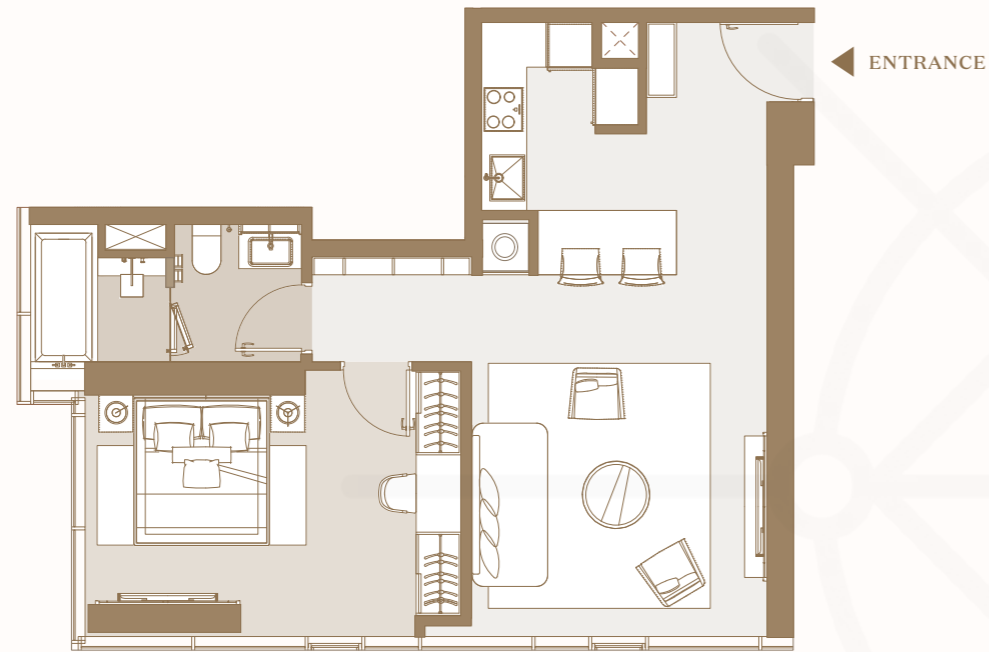
UNIT	NSA	GSA
M.06	58.27 m ²	64.54 m ²

- Living / Dining / Kitchen / Terrace
- Bedroom
- Bathroom

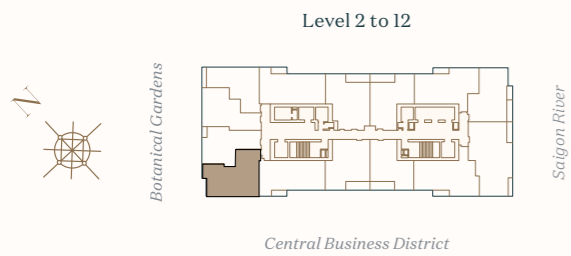
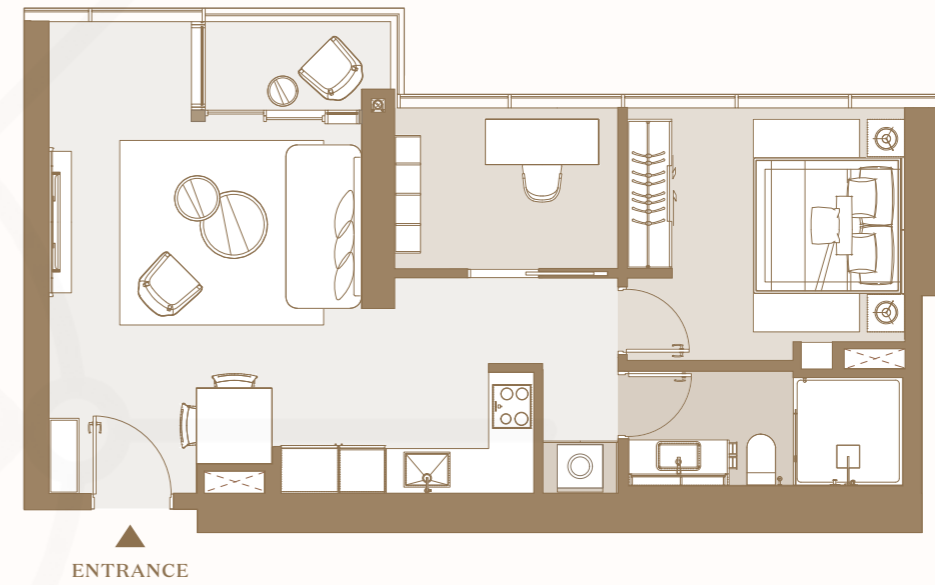
Disclaimer: Whilst every care has been taken to ensure accuracy in the preparation of the information contained herein, no warranties whatsoever are given or legal representation provided in respect thereon. The developer reserves the right to modify information of the development or any part thereof as may be approved or required by the relevant authorities. Name and code of unit in this document are for advertisement. The official name and code of unit will be as per the Sales and Purchase Agreement.

*Note: Final usable area to be verified by surveyor.
 - Net Saleable Area (NSA)
 - Gross Saleable Area (GSA)*

PRIME SUPERIOR SUITE



PRIME SUPERIOR SUITE

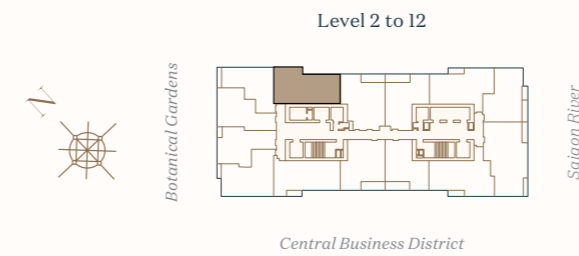


UNIT	NSA	GSA
M.08	58.27 m ²	64.57 m ²

- Living / Dining / Kitchen / Terrace
- Bedroom
- Bathroom

Disclaimer: Whilst every care has been taken to ensure accuracy in the preparation of the information contained herein, no warranties whatsoever are given or legal representation provided in respect thereon. The developer reserves the right to modify information of the development or any part thereof as may be approved or required by the relevant authorities. Name and code of unit in this document are for advertisement. The official name and code of unit will be as per the Sales and Purchase Agreement.

*Note: Final usable area to be verified by surveyor.
 - Net Saleable Area (NSA)
 - Gross Saleable Area (GSA)*



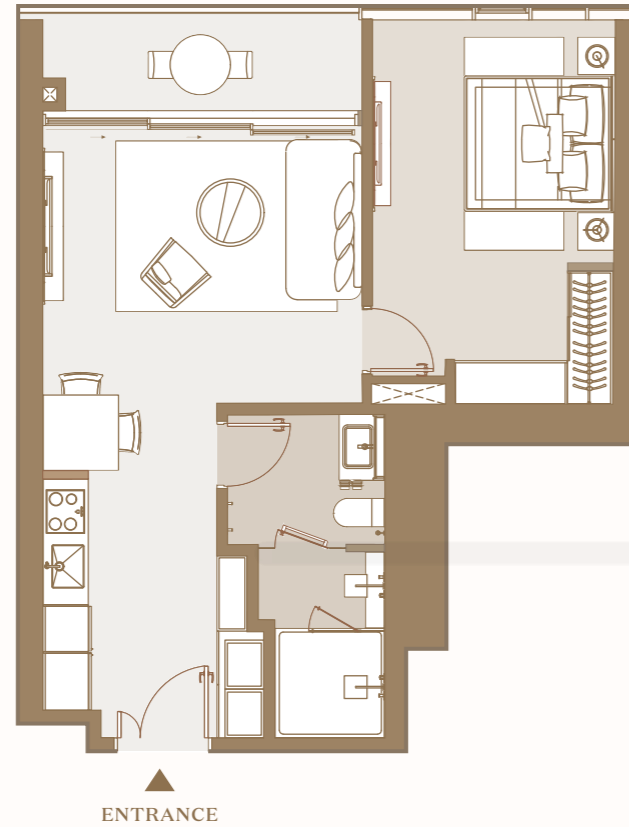
UNIT	NSA	GSA
M.12	61.08 m ²	67.50 m ²

- Living / Dining / Kitchen / Terrace
- Bedroom
- Bathroom

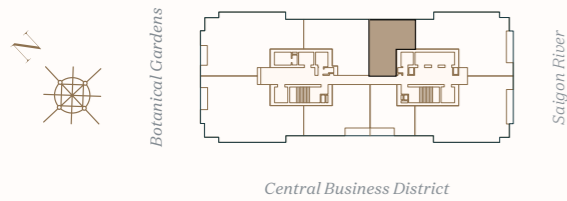
Disclaimer: Whilst every care has been taken to ensure accuracy in the preparation of the information contained herein, no warranties whatsoever are given or legal representation provided in respect thereon. The developer reserves the right to modify information of the development or any part thereof as may be approved or required by the relevant authorities. Name and code of unit in this document are for advertisement. The official name and code of unit will be as per the Sales and Purchase Agreement.

*Note: Final usable area to be verified by surveyor.
 - Net Saleable Area (NSA)
 - Gross Saleable Area (GSA)*

PRIME SUPERIOR SUITE



Level 22 to 35, 37 to 41



UNIT	NSA	GSA
M.08	58.05 m ²	63.12 m ²

◆ Living / Dining / Kitchen / Terrace ◆ Bedroom ◆ Bathroom

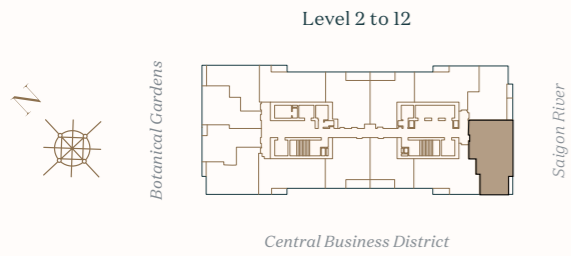
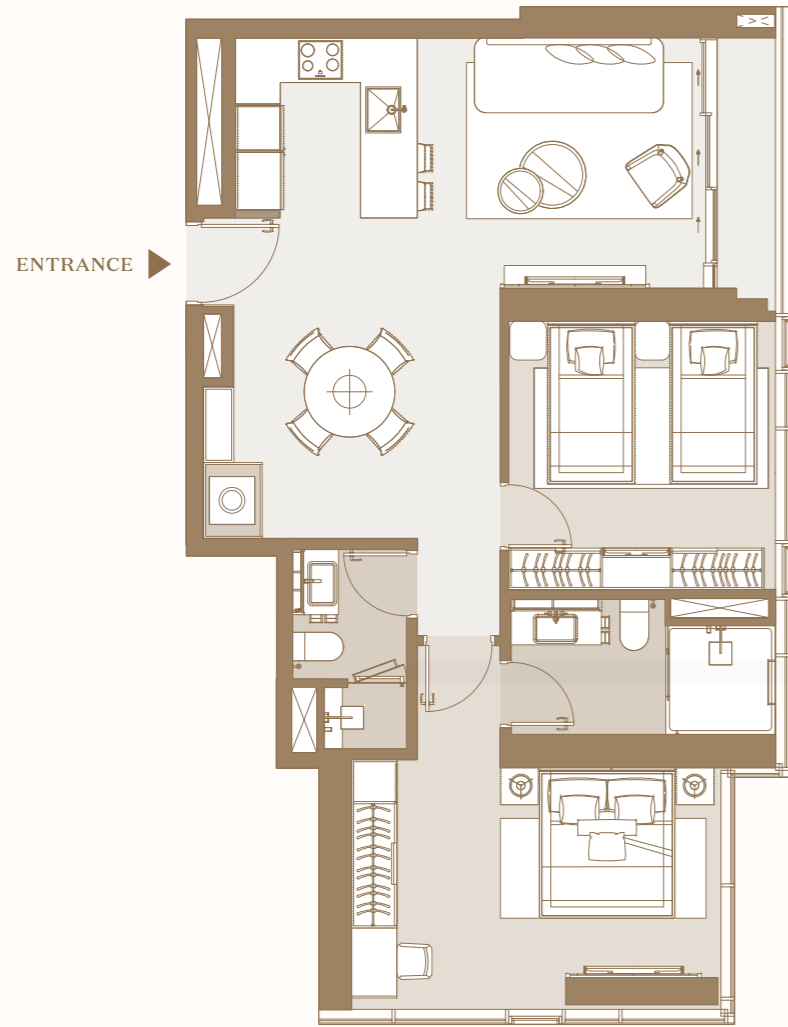
Disclaimer: Whilst every care has been taken to ensure accuracy in the preparation of the information contained herein, no warranties whatsoever are given or legal representation provided in respect thereon. The developer reserves the right to modify information of the development or any part thereof as may be approved or required by the relevant authorities. Name and code of unit in this document are for advertisement. The official name and code of unit will be as per the Sales and Purchase Agreement.

*Note: Final usable area to be verified by surveyor.
 - Net Saleable Area (NSA)
 - Gross Saleable Area (GSA)*



Prime Executive Suite

PRIME EXECUTIVE SUITE



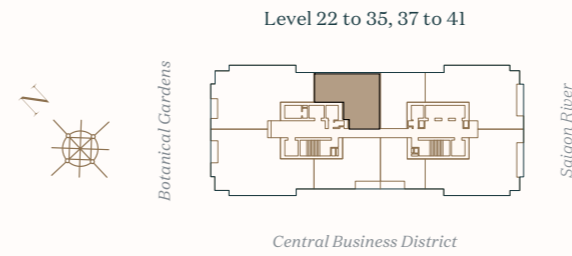
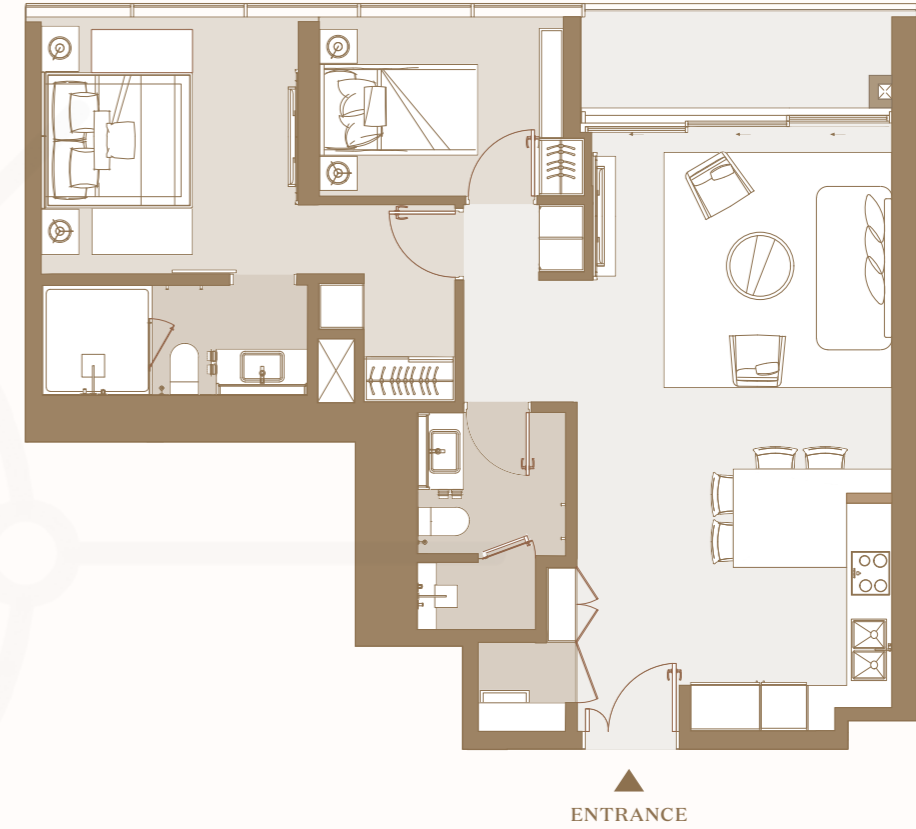
UNIT	NSA	GSA
M.03	79.69 m ²	88.58 m ²

Living / Dining / Kitchen / Terrace
 Bedroom
 Bathroom

Disclaimer: Whilst every care has been taken to ensure accuracy in the preparation of the information contained herein, no warranties whatsoever are given or legal representation provided in respect thereon. The developer reserves the right to modify information of the development or any part thereof as may be approved or required by the relevant authorities. Name and code of unit in this document are for advertisement. The official name and code of unit will be as per the Sales and Purchase Agreement.

*Note: Final usable area to be verified by surveyor.
 - Net Saleable Area (NSA)
 - Gross Saleable Area (GSA)*

PRIME EXECUTIVE SUITE



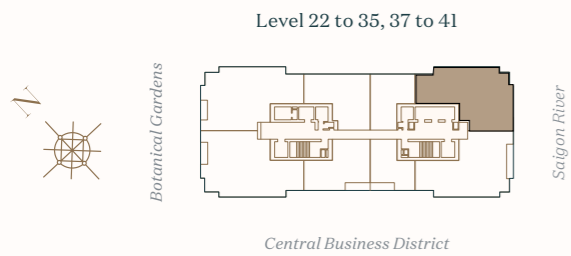
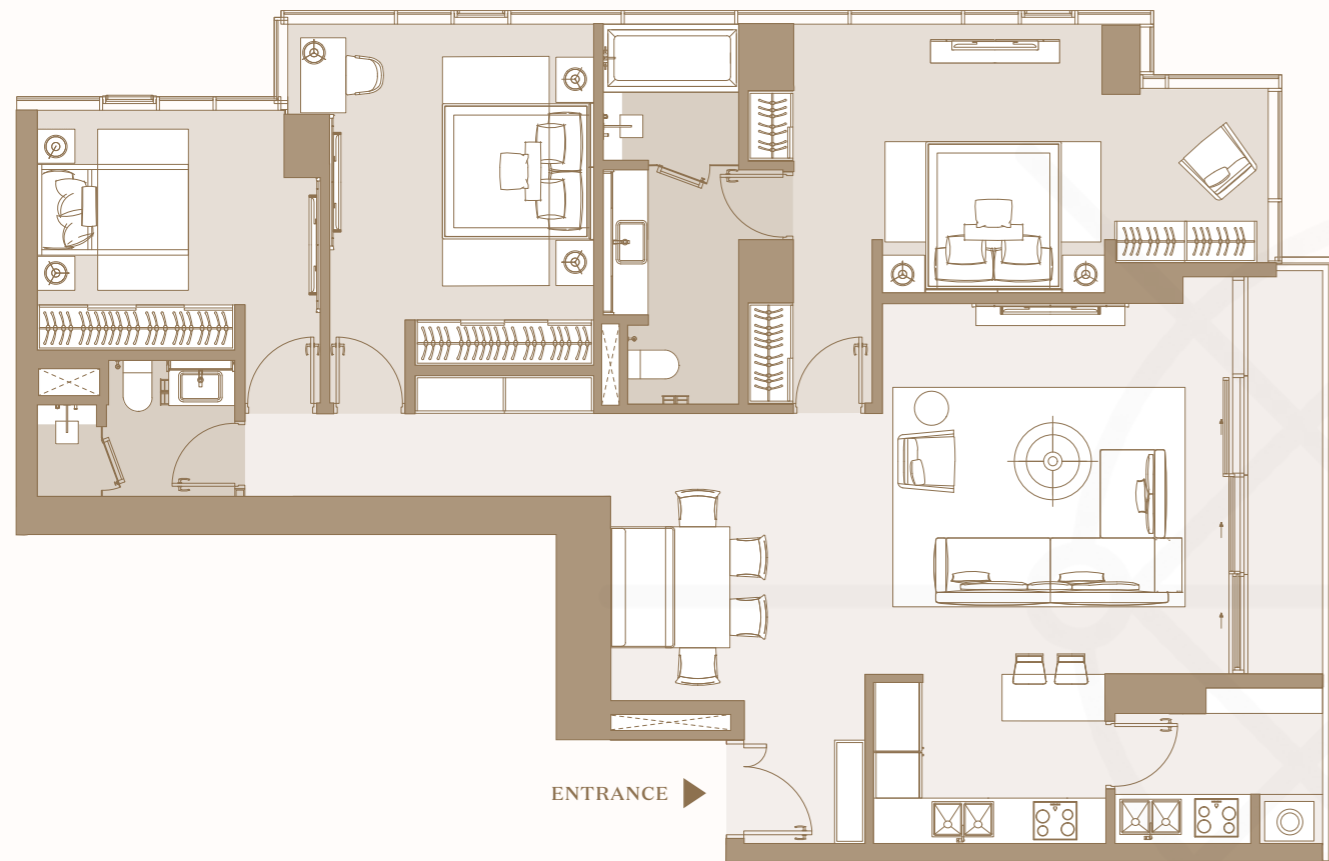
UNIT	NSA	GSA
M.07	82.40 m ²	88.92 m ²

Living / Dining / Kitchen / Terrace
 Bedroom
 Bathroom

Disclaimer: Whilst every care has been taken to ensure accuracy in the preparation of the information contained herein, no warranties whatsoever are given or legal representation provided in respect thereon. The developer reserves the right to modify information of the development or any part thereof as may be approved or required by the relevant authorities. Name and code of unit in this document are for advertisement. The official name and code of unit will be as per the Sales and Purchase Agreement.

*Note: Final usable area to be verified by surveyor.
 - Net Saleable Area (NSA)
 - Gross Saleable Area (GSA)*

PRIME PREMIER SUITE



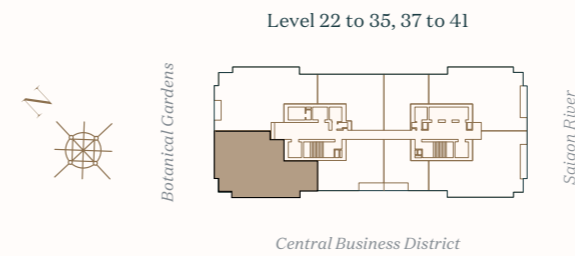
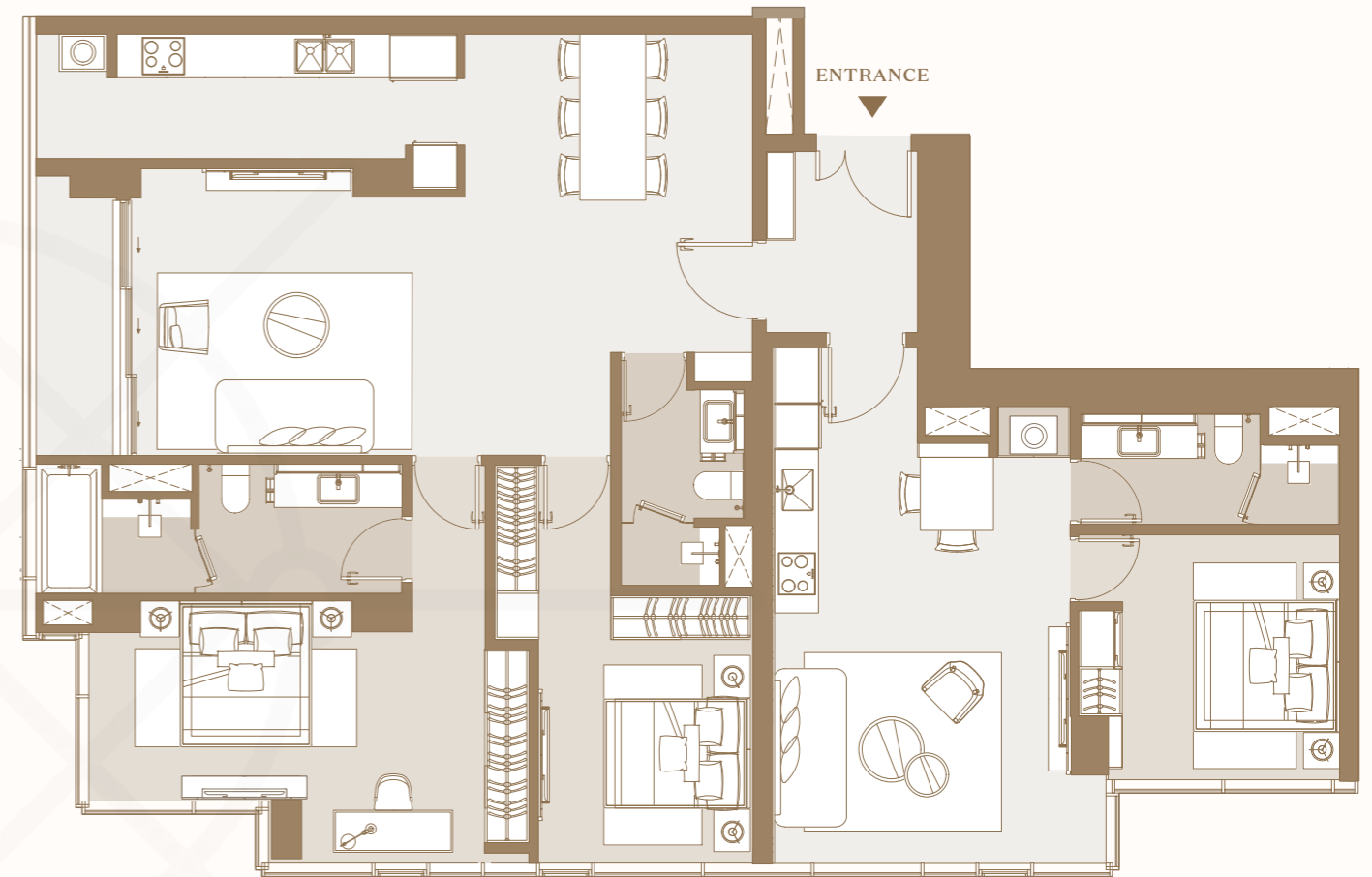
UNIT	NSA	GSA
M.01	134.75 m ²	144.84 m ²

Living / Dining / Kitchen / Terrace
 Bedroom
 Bathroom

Disclaimer: Whilst every care has been taken to ensure accuracy in the preparation of the information contained herein, no warranties whatsoever are given or legal representation provided in respect thereon. The developer reserves the right to modify information of the development or any part thereof as may be approved or required by the relevant authorities. Name and code of unit in this document are for advertisement. The official name and code of unit will be as per the Sales and Purchase Agreement.

*Note: Final usable area to be verified by surveyor.
 - Net Saleable Area (NSA)
 - Gross Saleable Area (GSA)*

PRIME FAMILY SUITE



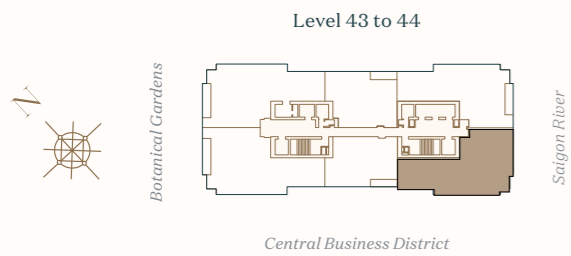
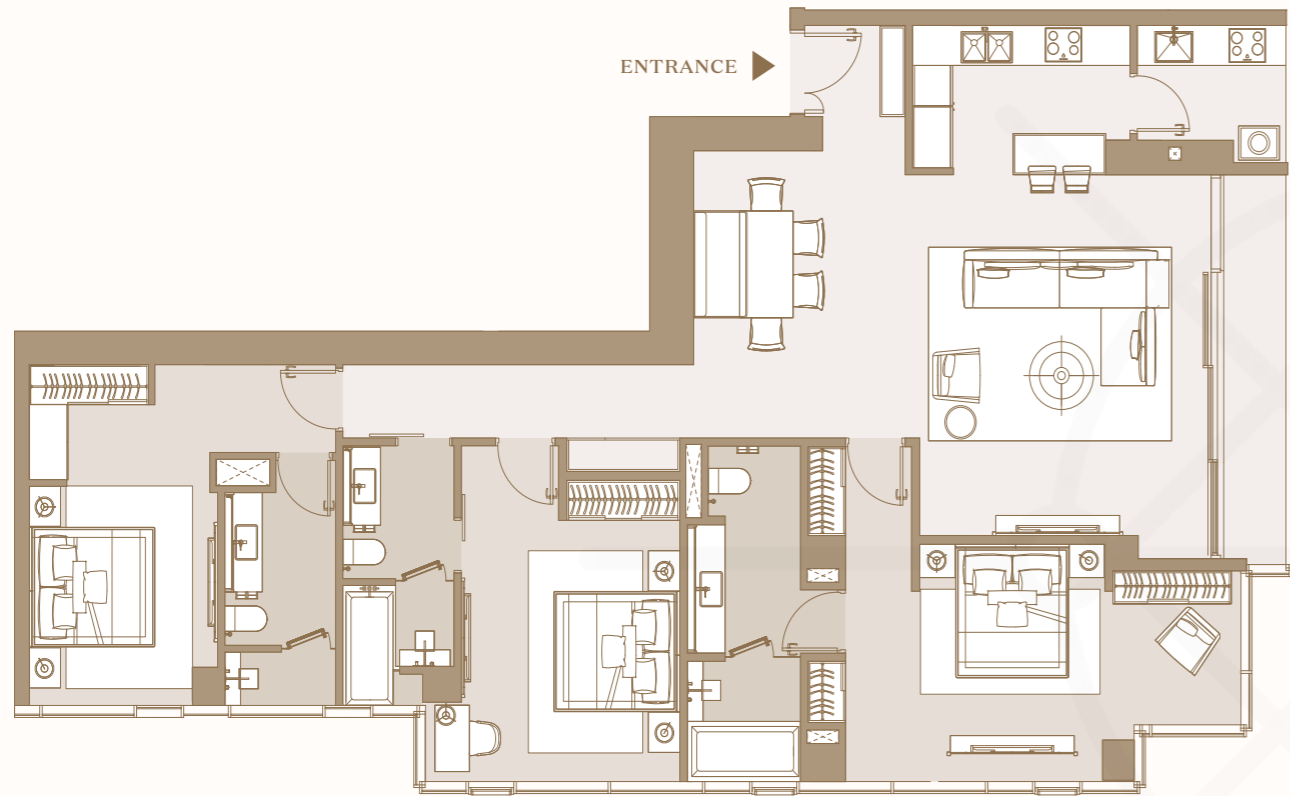
UNIT	NSA	GSA
M.05	154.90 m ²	166.87 m ²

Living / Dining / Kitchen / Terrace
 Bedroom
 Bathroom

Disclaimer: Whilst every care has been taken to ensure accuracy in the preparation of the information contained herein, no warranties whatsoever are given or legal representation provided in respect thereon. The developer reserves the right to modify information of the development or any part thereof as may be approved or required by the relevant authorities. Name and code of unit in this document are for advertisement. The official name and code of unit will be as per the Sales and Purchase Agreement.

*Note: Final usable area to be verified by surveyor.
 - Net Saleable Area (NSA)
 - Gross Saleable Area (GSA)*

PRIME GRAND SUITE



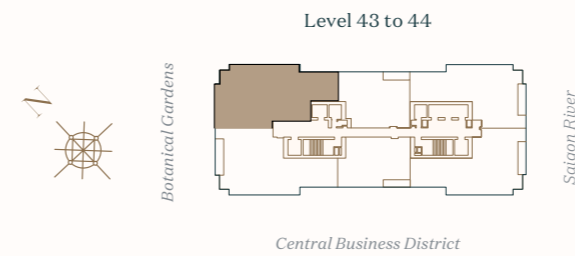
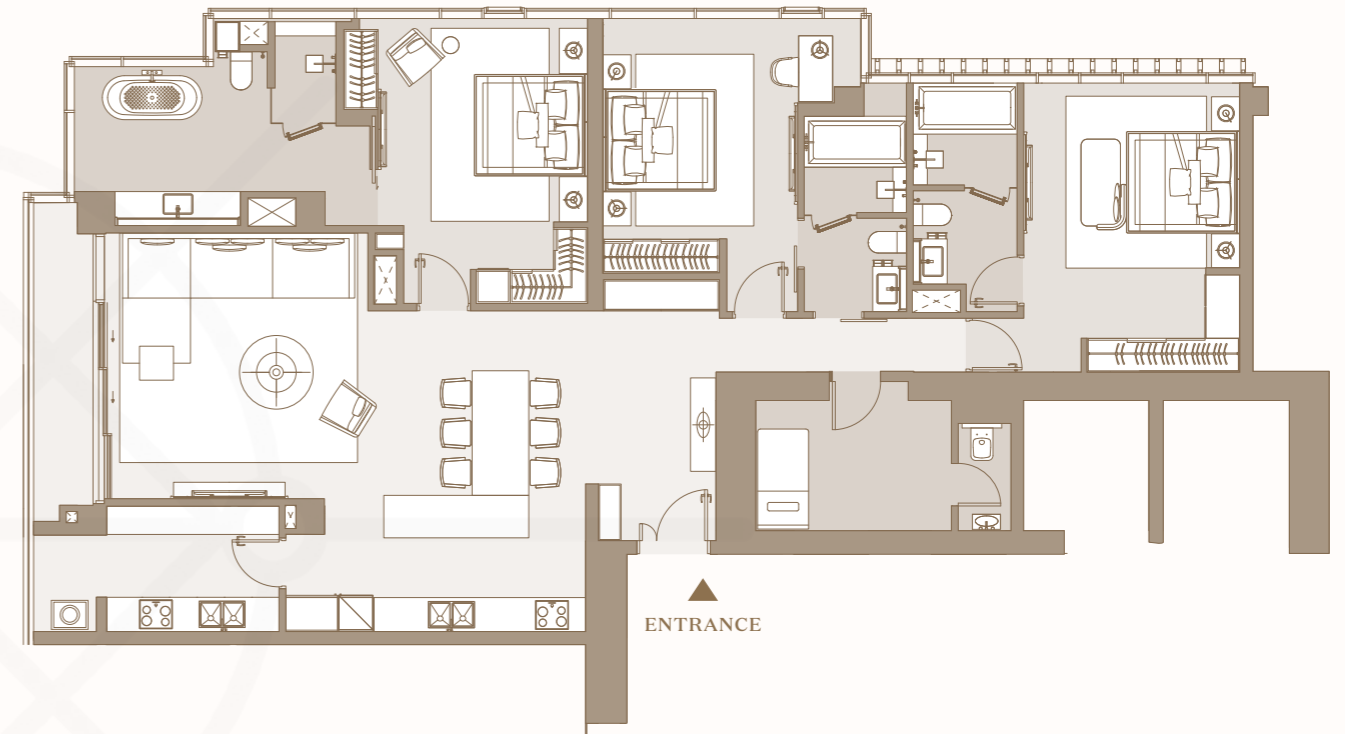
UNIT	NSA	GSA
M.02	155.10 m ²	165.15 m ²

Living / Dining / Kitchen / Terrace
 Bedroom
 Bathroom

Disclaimer: Whilst every care has been taken to ensure accuracy in the preparation of the information contained herein, no warranties whatsoever are given or legal representation provided in respect thereon. The developer reserves the right to modify information of the development or any part thereof as may be approved or required by the relevant authorities. Name and code of unit in this document are for advertisement. The official name and code of unit will be as per the Sales and Purchase Agreement.

*Note: Final usable area to be verified by surveyor.
 - Net Saleable Area (NSA)
 - Gross Saleable Area (GSA)*

PRIME GRAND SUITE



UNIT	NSA	GSA
M.05	178.66 m ²	192.12 m ²

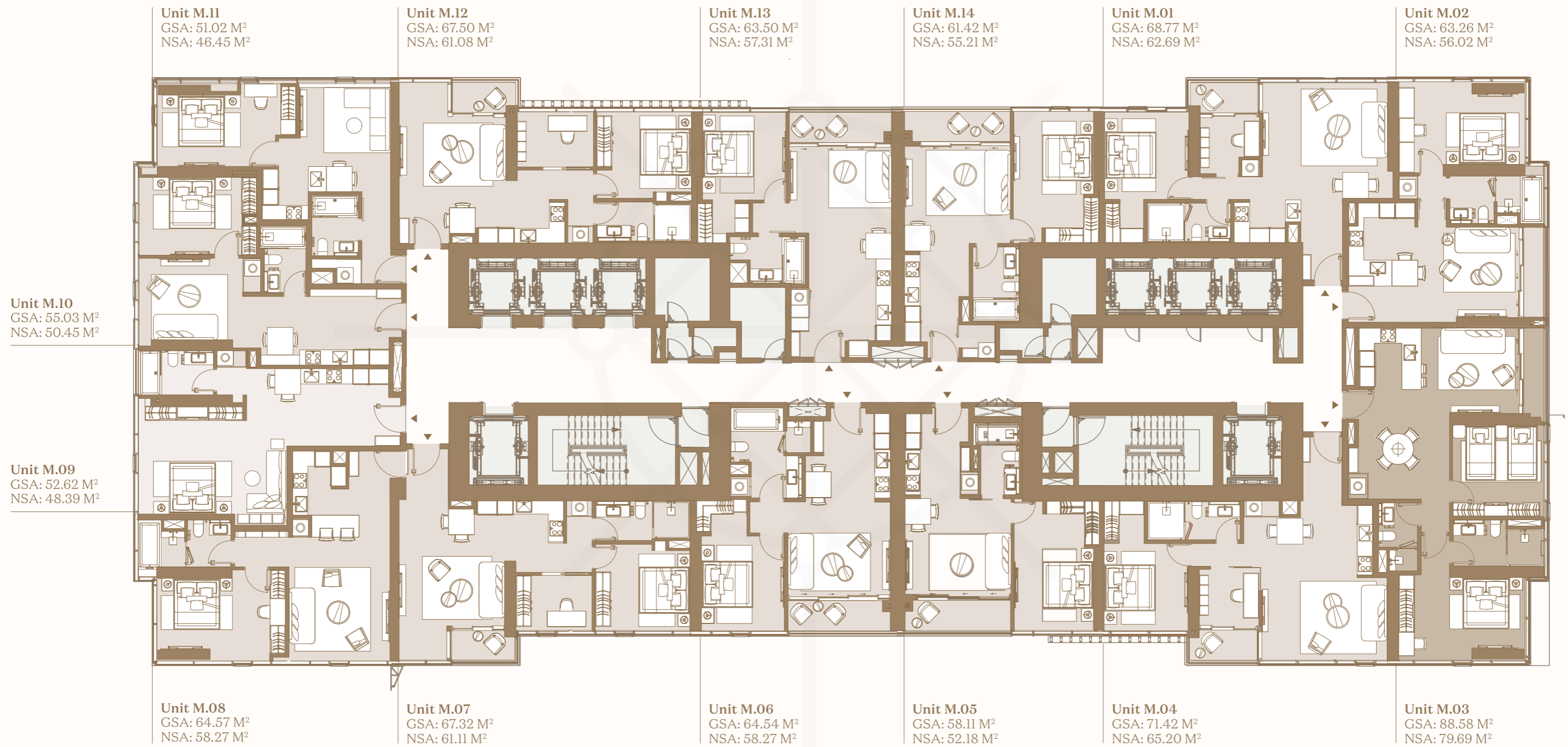
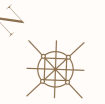
Living / Dining / Kitchen / Terrace
 Bedroom
 Bathroom

Disclaimer: Whilst every care has been taken to ensure accuracy in the preparation of the information contained herein, no warranties whatsoever are given or legal representation provided in respect thereon. The developer reserves the right to modify information of the development or any part thereof as may be approved or required by the relevant authorities. Name and code of unit in this document are for advertisement. The official name and code of unit will be as per the Sales and Purchase Agreement.

*Note: Final usable area to be verified by surveyor.
 - Net Saleable Area (NSA)
 - Gross Saleable Area (GSA)*

PRIME LAKE TYPICAL FLOOR PLAN

LEVEL 2 TO 12



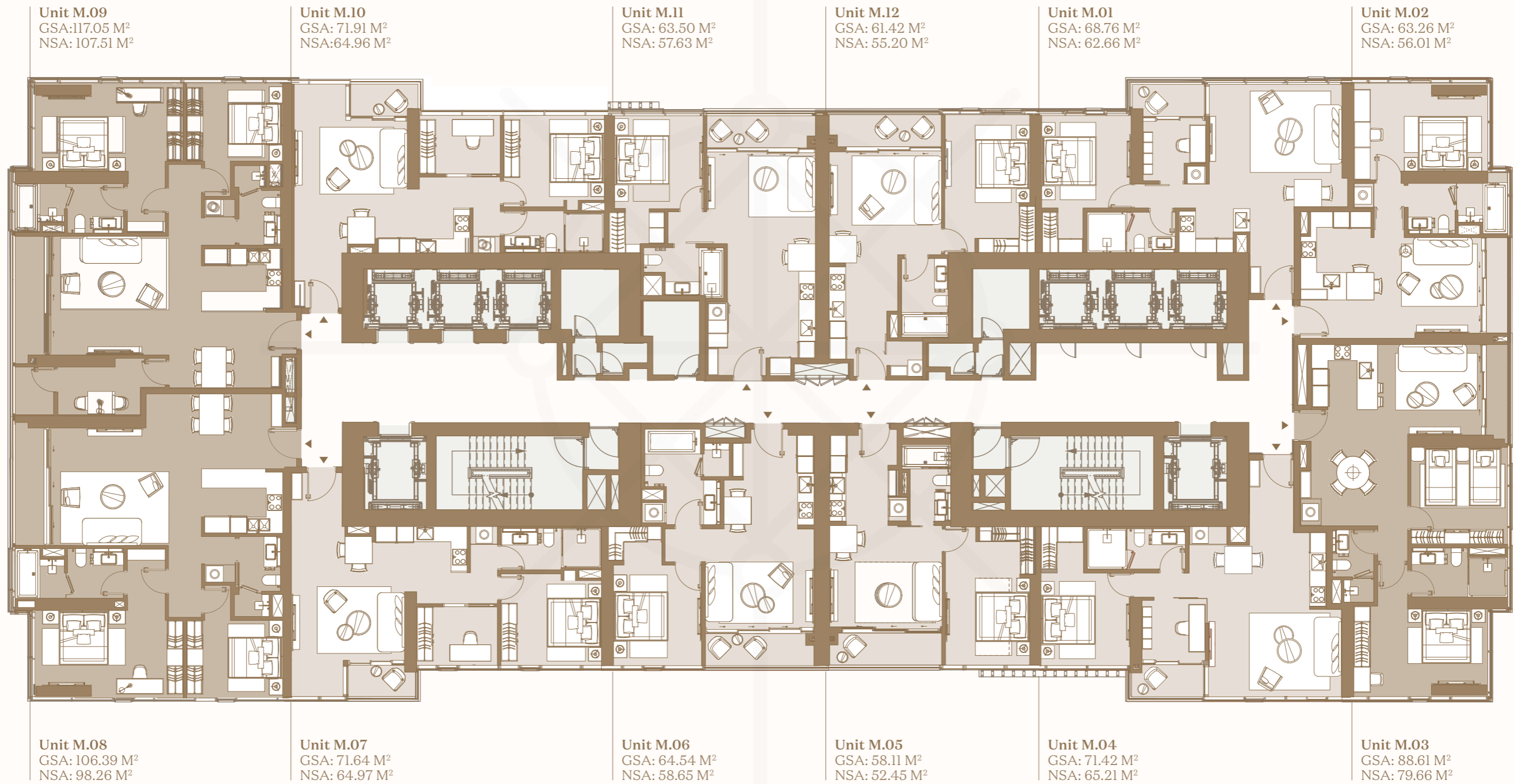
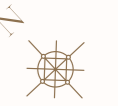
- Studio Room
Prime Excellence Suite
- 1 Bedroom
Prime Superior Suite
- 2 Bedroom
Prime Executive Suite
- 3 Bedroom
Prime Premier / Grand Suite
- Dual-key Room
Prime Family Suite

Disclaimer: Whilst every care has been taken to ensure accuracy in the preparation of the information contained herein, no warranties whatsoever are given or legal representation provided in respect thereon. The developer reserves the right to modify information of the development or any part thereof as may be approved or required by the relevant authorities. Name and code of unit in this document are for advertisement. The official name and code of unit will be as per the Sales and Purchase Agreement.

*Note: Final usable area to be verified by surveyor.
- Net Saleable Area (NSA)
- Gross Saleable Area (GSA)*

PRIME LAKE TYPICAL FLOOR PLAN

LEVEL 13 TO 15



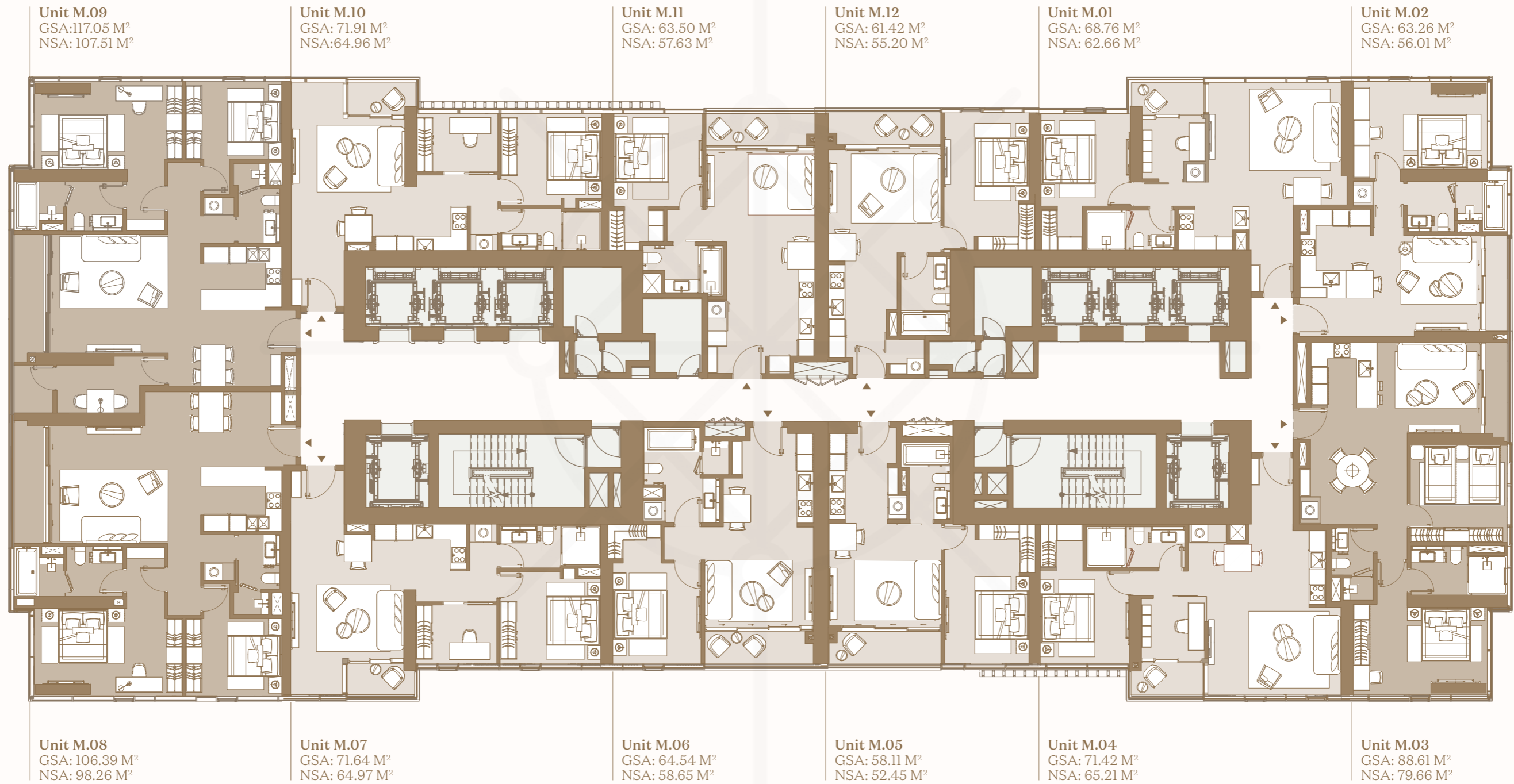
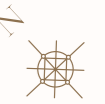
- Studio Room
Prime Excellence Suite
- 1 Bedroom
Prime Superior Suite
- 2 Bedroom
Prime Executive Suite
- 3 Bedroom
Prime Premier / Grand Suite
- Dual-key Room
Prime Family Suite

Disclaimer: Whilst every care has been taken to ensure accuracy in the preparation of the information contained herein, no warranties whatsoever are given or legal representation provided in respect thereon. The developer reserves the right to modify information of the development or any part thereof as may be approved or required by the relevant authorities. Name and code of unit in this document are for advertisement. The official name and code of unit will be as per the Sales and Purchase Agreement.

*Note: Final usable area to be verified by surveyor.
- Net Saleable Area (NSA)
- Gross Saleable Area (GSA)*

PRIME LAKE TYPICAL FLOOR PLAN

LEVEL 16 TO 18



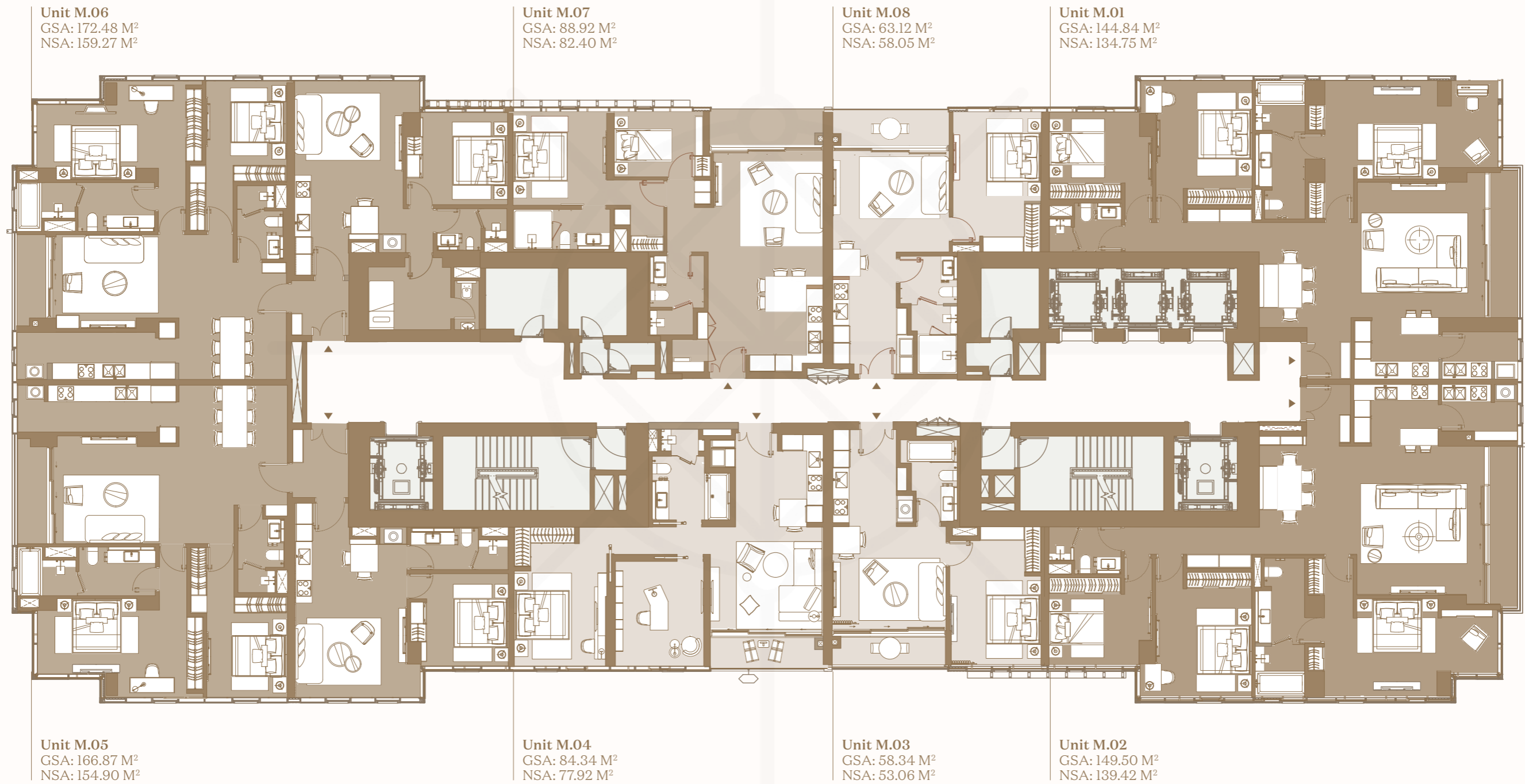
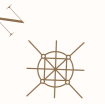
- Studio Room
Prime Excellence Suite
- 1 Bedroom
Prime Superior Suite
- 2 Bedroom
Prime Executive Suite
- 3 Bedroom
Prime Premier / Grand Suite
- Dual-key Room
Prime Family Suite

Disclaimer: Whilst every care has been taken to ensure accuracy in the preparation of the information contained herein, no warranties whatsoever are given or legal representation provided in respect thereon. The developer reserves the right to modify information of the development or any part thereof as may be approved or required by the relevant authorities. Name and code of unit in this document are for advertisement. The official name and code of unit will be as per the Sales and Purchase Agreement.

*Note: Final usable area to be verified by surveyor.
- Net Saleable Area (NSA)
- Gross Saleable Area (GSA)*

PRIME LAKE TYPICAL FLOOR PLAN

LEVEL 22 TO 35, 37 TO 41



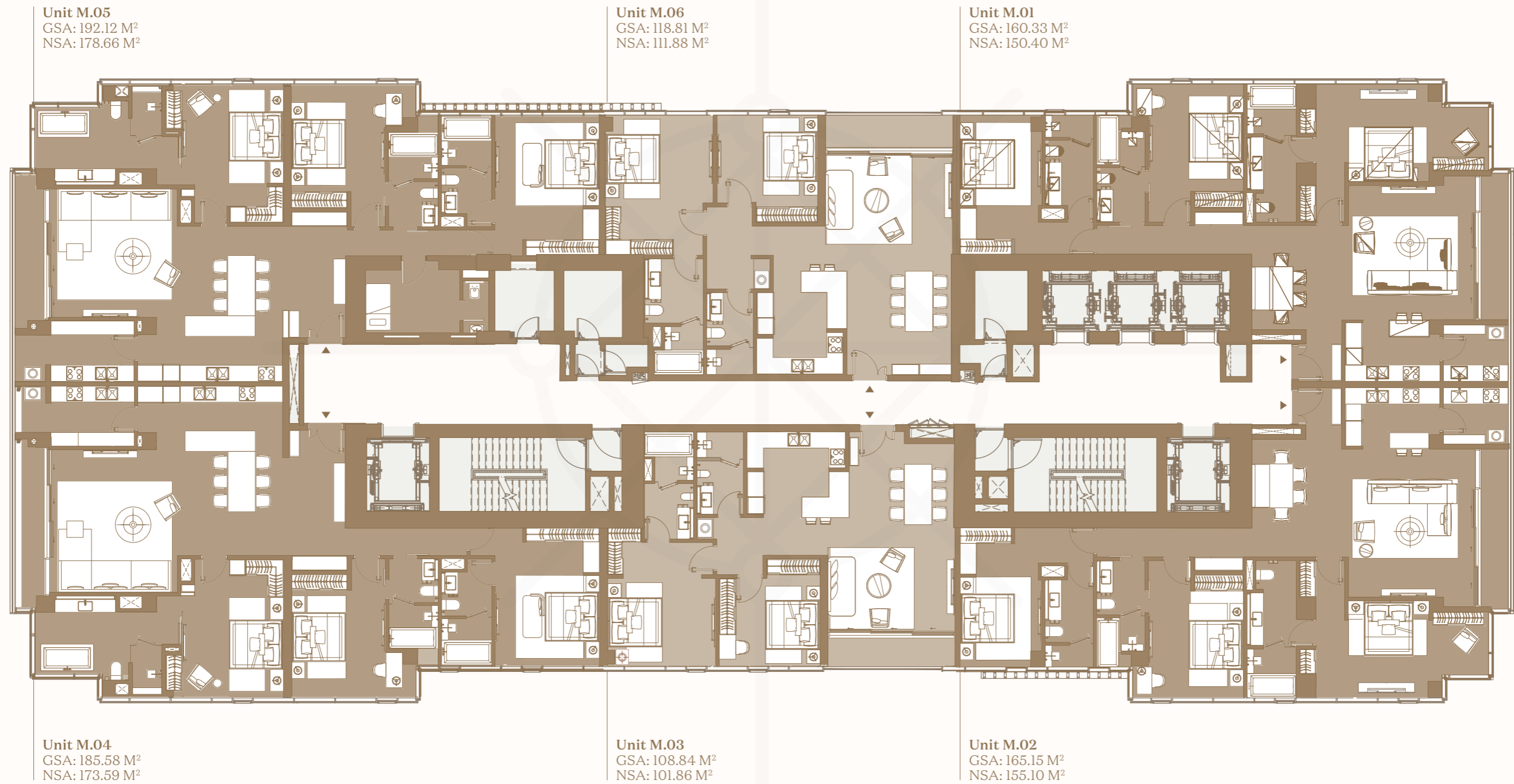
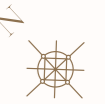
- Studio Room
Prime Excellence Suite
- 1 Bedroom
Prime Superior Suite
- 2 Bedroom
Prime Executive Suite
- 3 Bedroom
Prime Premier / Grand Suite
- Dual-key Room
Prime Family Suite

Disclaimer: Whilst every care has been taken to ensure accuracy in the preparation of the information contained herein, no warranties whatsoever are given or legal representation provided in respect thereon. The developer reserves the right to modify information of the development or any part thereof as may be approved or required by the relevant authorities. Name and code of unit in this document are for advertisement. The official name and code of unit will be as per the Sales and Purchase Agreement.

*Note: Final usable area to be verified by surveyor.
- Net Saleable Area (NSA)
- Gross Saleable Area (GSA)*

PRIME LAKE TYPICAL FLOOR PLAN

LEVEL 43 TO 44



- Studio Room
- Prime Excellence Suite
- 1 Bedroom Prime Superior Suite
- 2 Bedroom Prime Executive Suite
- 3 Bedroom Prime Premier / Grand Suite
- Dual-key Room Prime Family Suite

Disclaimer: Whilst every care has been taken to ensure accuracy in the preparation of the information contained herein, no warranties whatsoever are given or legal representation provided in respect thereon. The developer reserves the right to modify information of the development or any part thereof as may be approved or required by the relevant authorities. Name and code of unit in this document are for advertisement. The official name and code of unit will be as per the Sales and Purchase Agreement.

*Note: Final usable area to be verified by surveyor.
- Net Saleable Area (NSA)
- Gross Saleable Area (GSA)*



SPECIFICATIONS

Outstanding to the last detail, every residence at Lake Tower is designed to the meticulous standards of Marriott. Using premium branded appliances and fixtures, fine interiors are crafted for a lifetime of opulent comfort.

Floor Finishes	Kitchen / Dining - quartz stone/tile
Wall Finishes	Bathroom - marble and tile
Doors	Digital door lock - access type: key pass, fingerprint lock, mechanical key, card
Sanitary Ware	<ul style="list-style-type: none"> • Wash basin • Water closet • Shower mixer • Wash basin faucets • Toilet fixtures: towel bar, toilet-paper holder, bidet sprayer
Air Conditioner	Centralised chiller system
Kitchen	<ul style="list-style-type: none"> • Induction stove with three hobs • Single/double stainless-steel sink • Sink faucet (with mixer tap) with automatic sensor and extendable hose • Kitchen hood • Oven

Note: Preliminary specifications only. The full specifications list will be detailed in the Sales and Purchase Agreement.



DEVELOPED BY



MASTERISE HOMES

 No.2, Ton Duc Thang Street, Ben Nghe Ward, District 1, Ho Chi Minh City, Vietnam

 (028) 39 159 159  grandmarina@masterisehomes.com  masterisehomes.com/grand-marina-saigon  facebook.com/OfficialGrandMarinaSaigon

Disclaimer: Whilst every care has been taken to ensure accuracy in the preparation of the information contained herein, no warranties whatsoever are given or legal representation provided in respect thereon. The developer reserves the right to modify information of the development or any part thereof as may be approved or required by the relevant authorities.

The Marriott Residences, Grand Marina Saigon are not owned, developed or sold by Marriott International, Inc. or its affiliates ("Marriott"). The Marriott marks are used under a license from Marriott, which has not confirmed the accuracy of any of the statements or representations made herein. Masterise Homes and its affiliates are responsible for the accuracy of any of the images, statements or representations made herein.