



GRAND MARINA

THE
LEGACY
COLLECTION



SEA



JW MARRIOTT

RESIDENCES

GRAND MARINA SAIGON

A GLOBAL LANDMARK A NATION'S ICON

Superlative comfort and class await at The Legacy Collection's Sea.

Rising 47 floors above the city, this breathtaking new addition to the skyline commands unrivalled views of the Saigon River and the Botanical gardens.

Sea offers a variety of room and penthouse choices, each finished to immaculate perfection, with luxe materials and spacious, open-plan design.

Feature facilities on the top and first floor of this building is an array of luxury amenities including the residence lobby, mail room, library lounge, theatre, boardroom, children's room, fitness centre, and crowned by a spectacular rooftop infinity pool that offers panoramic views up and down the Saigon River.

As with all homes in The Legacy Collection, Sea provides owners with the consummate residential services of JW Marriott.

BEYOND COMPARE

Managed by JW Marriott, homes at Legacy Sea offer a lifestyle of sublime comfort and prestige. Every exquisite home in The Legacy Collection features JW Marriott's impeccable residential services, alongside world-class leisure amenities complemented by an extensive array of included and à-la-carte services, imbuing every aspect of life with effortless luxury.



LIFE AT LEGACY SEA

Located in the centrepiece tower of Grand Marina, Saigon, Legacy Sea homes assume a powerful position in the country's most prestigious residential development. From the lobby, it's just steps to Royal Park, Lotus Park and an array of lifestyle outlets, while the tower's top floor features luxury amenities and a rooftop infinity pool. Homes at Legacy Sea overlook the river and the botanical gardens, showcasing the best views in Saigon.



Disclaimer: All images of lotus park and elevated walkway in this document are illustrated based on the current materials and are subject to changes and final approval of the authorised government office.



A PRIVILEGED POSITION

Located between the Saigon River and the Botanical and Zoological Gardens, Legacy Sea offers quick access to every manicured green space of Grand Marina, Saigon. Residents enjoy easy access to the city, while the waterfront promenade is only seconds away via lush garden pathways.



Disclaimer: All images of lotus park and elevated walkway in this document are illustrated based on the current materials and are subject to changes and final approval of the authorised government office.

OUTSTANDING DESIGN

Every elegant space at Legacy Sea is imbued with an air of refined warmth and beauty. Light-filled and flawlessly finished, both private and public spaces blend exquisite materials with meticulous craftsmanship and design that inspires and delights.



EXCELLENCE ON EVERY LEVEL

Legacy Sea features an exclusive facility floor with luxury amenities including the residence lobby, mail room, library lounge, theatre, boardroom, children's room, fitness centre, rooftop infinity pool, and a retail floor on the ground level. Car-parking levels are situated underground, accessible via high-speed lifts.

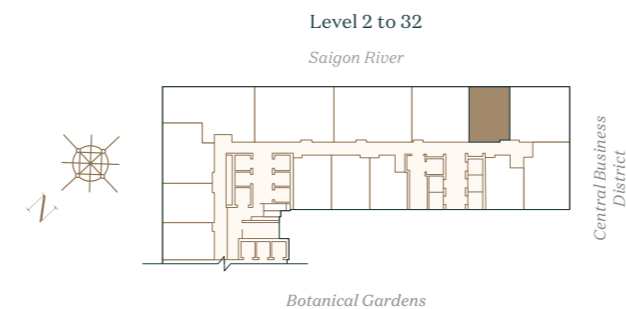
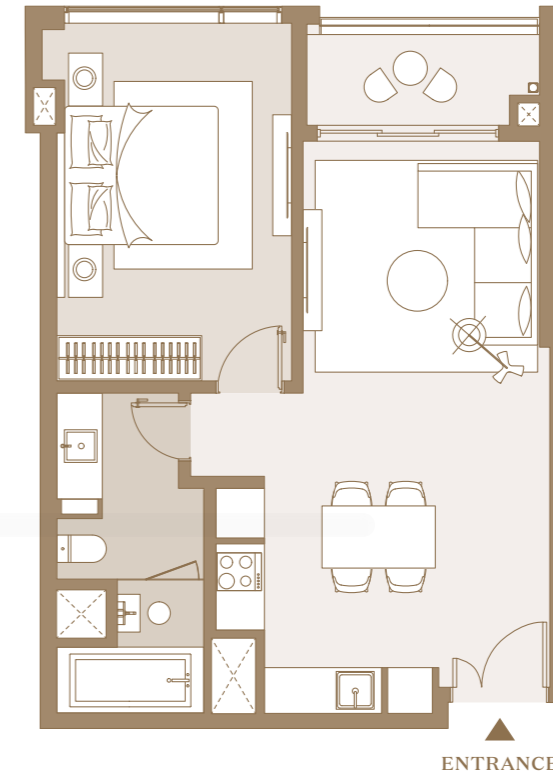


AN
URBAN OASIS



Natural materials and spacious, open-plan design at Legacy Sea create living spaces that are bright and inspiring. The finest fittings and furnishings ensure every detail is finished to perfection, and every residence a work of art.

LEGACY SUPERIOR SUITE



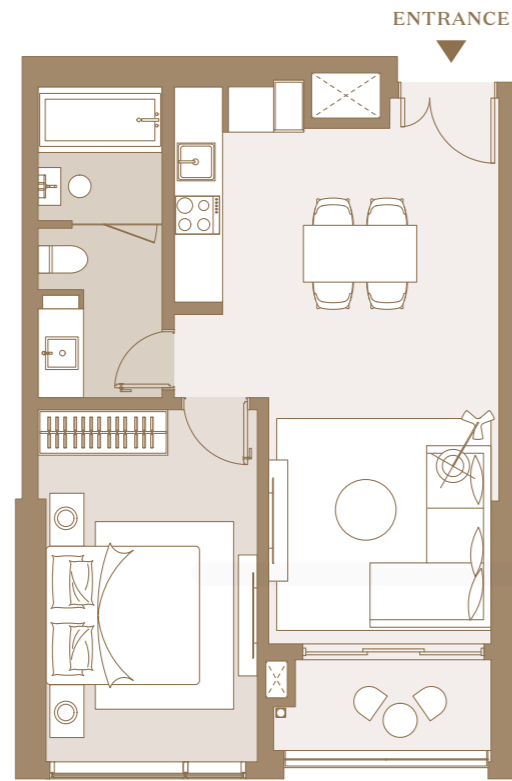
UNIT	NSA	GSA
J.09	55.95 - 56.23 m ²	62.36 m ²

- ◊ Living / Dining / Kitchen / Terrace
- ◊ Bedroom
- ◊ Bathroom

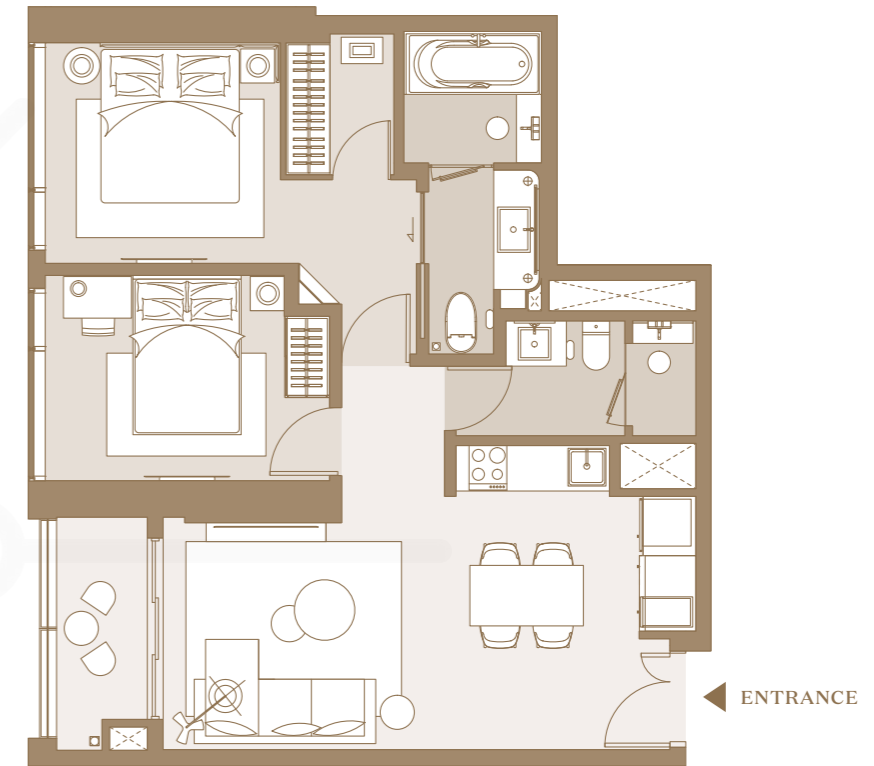
Disclaimer: Whilst every care has been taken to ensure accuracy in the preparation of the information contained herein, no warranties whatsoever are given or legal representation provided in respect thereof. The developer reserves the right to modify information of the development or any part thereof as may be approved or required by the relevant authorities. Name and code of unit in this document are for advertisement. The official name and code of unit will be as per the Sales and Purchase Agreement.

*Note: Final usable area to be verified by surveyor.
- Net Saleable Area (NSA)
- Gross Saleable Area (GSA)*

LEGACY SUPERIOR SUITE

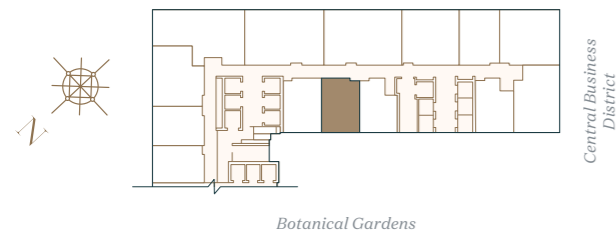


LEGACY EXECUTIVE SUITE



Level 2, 3 to 8, 10 to 26, 29 to 32

Saigon River



UNIT	NSA	GSA
J.14	51.84 - 52.50 m ²	58.19 m ²

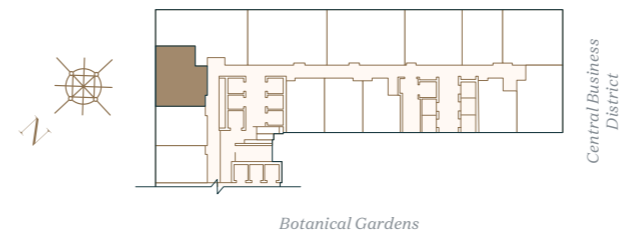
Living / Dining / Kitchen / Terrace
 Bedroom
 Bathroom

Disclaimer: Whilst every care has been taken to ensure accuracy in the preparation of the information contained herein, no warranties whatsoever are given or legal representation provided in respect thereof. The developer reserves the right to modify information of the development or any part thereof as may be approved or required by the relevant authorities. Name and code of unit in this document are for advertisement. The official name and code of unit will be as per the Sales and Purchase Agreement.

*Note: Final usable area to be verified by surveyor.
 - Net Saleable Area (NSA)
 - Gross Saleable Area (GSA)*

Level 2 to 44

Saigon River



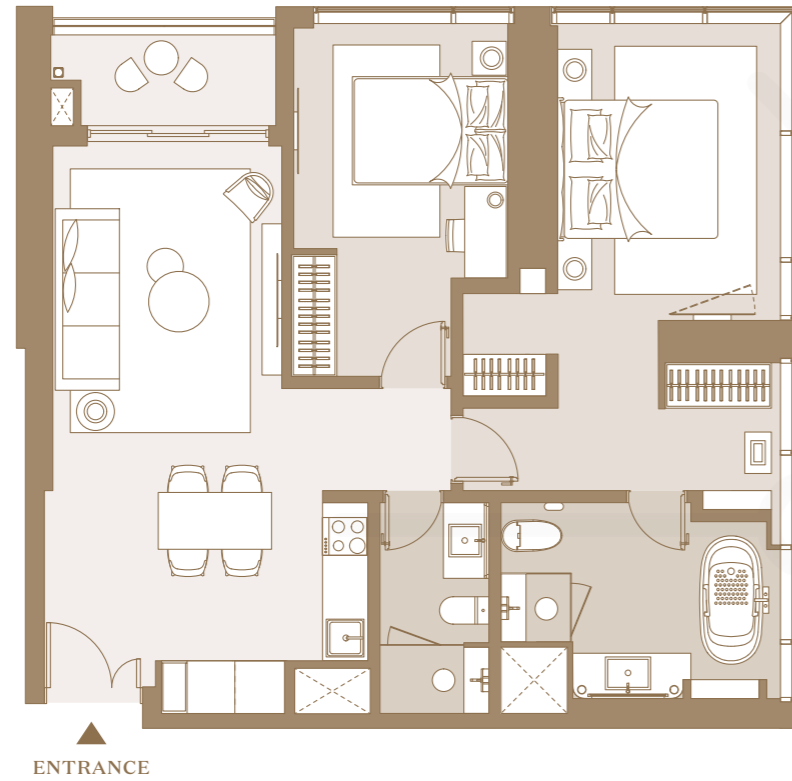
UNIT	NSA	GSA
J.04	69.74 - 70.79 m ²	78.22 m ²

Living / Dining / Kitchen / Terrace
 Bedroom
 Bathroom

Disclaimer: Whilst every care has been taken to ensure accuracy in the preparation of the information contained herein, no warranties whatsoever are given or legal representation provided in respect thereof. The developer reserves the right to modify information of the development or any part thereof as may be approved or required by the relevant authorities. Name and code of unit in this document are for advertisement. The official name and code of unit will be as per the Sales and Purchase Agreement.

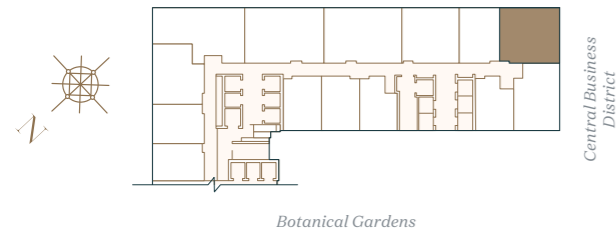
*Note: Final usable area to be verified by surveyor.
 - Net Saleable Area (NSA)
 - Gross Saleable Area (GSA)*

LEGACY EXECUTIVE SUITE



Level 2 to 32

Saigon River



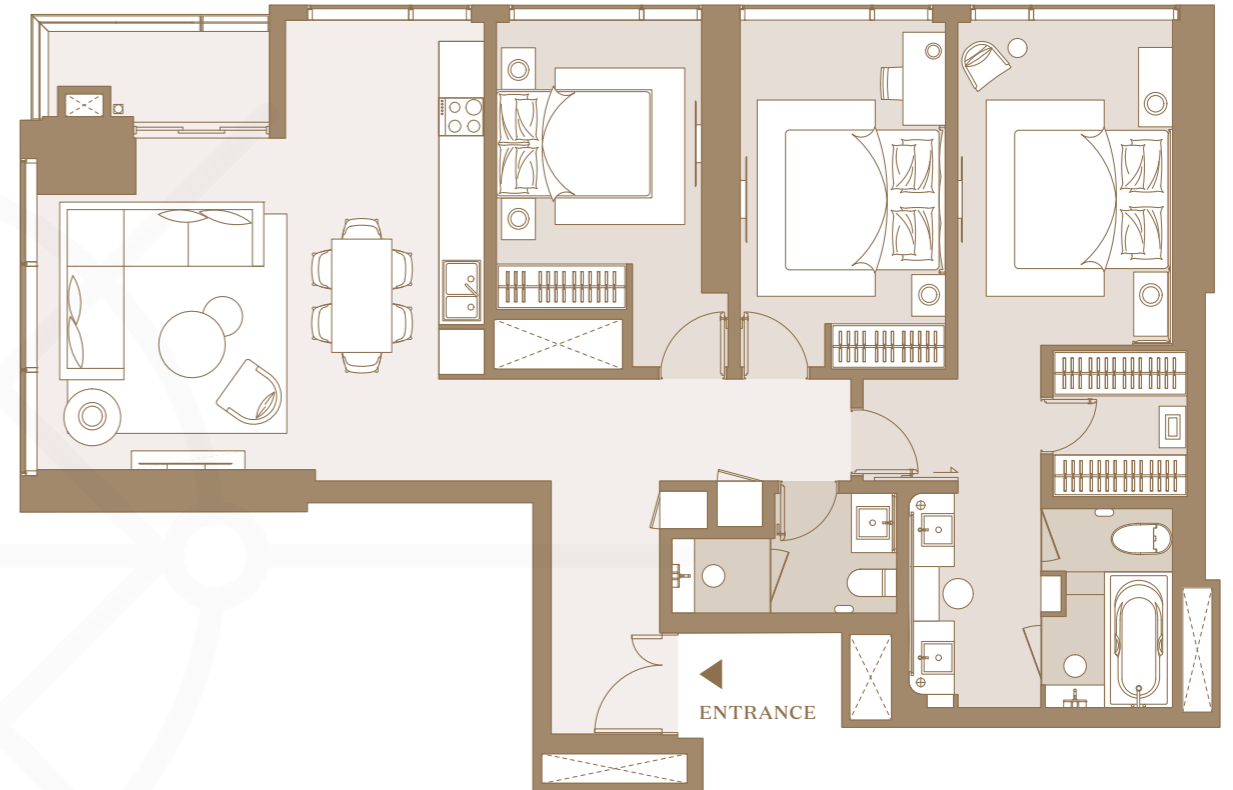
UNIT	NSA	GSA
J.10	82.73 - 83.97 m ²	92.61 m ²

◆ Living / Dining / Kitchen / Terrace ◆ Bedroom ◆ Bathroom

Disclaimer: Whilst every care has been taken to ensure accuracy in the preparation of the information contained herein, no warranties whatsoever are given or legal representation provided in respect thereon. The developer reserves the right to modify information of the development or any part thereof as may be approved or required by the relevant authorities. Name and code of unit in this document are for advertisement. The official name and code of unit will be as per the Sales and Purchase Agreement.

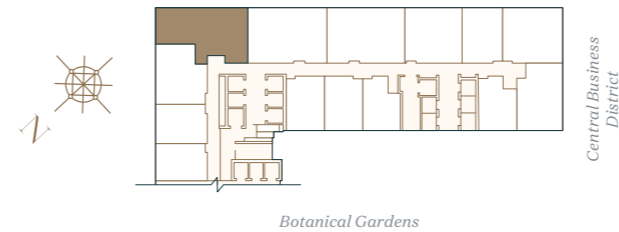
*Note: Final usable area to be verified by surveyor.
- Net Saleable Area (NSA)
- Gross Saleable Area (GSA)*

LEGACY PREMIER SUITE



Level 2 to 44

Saigon River



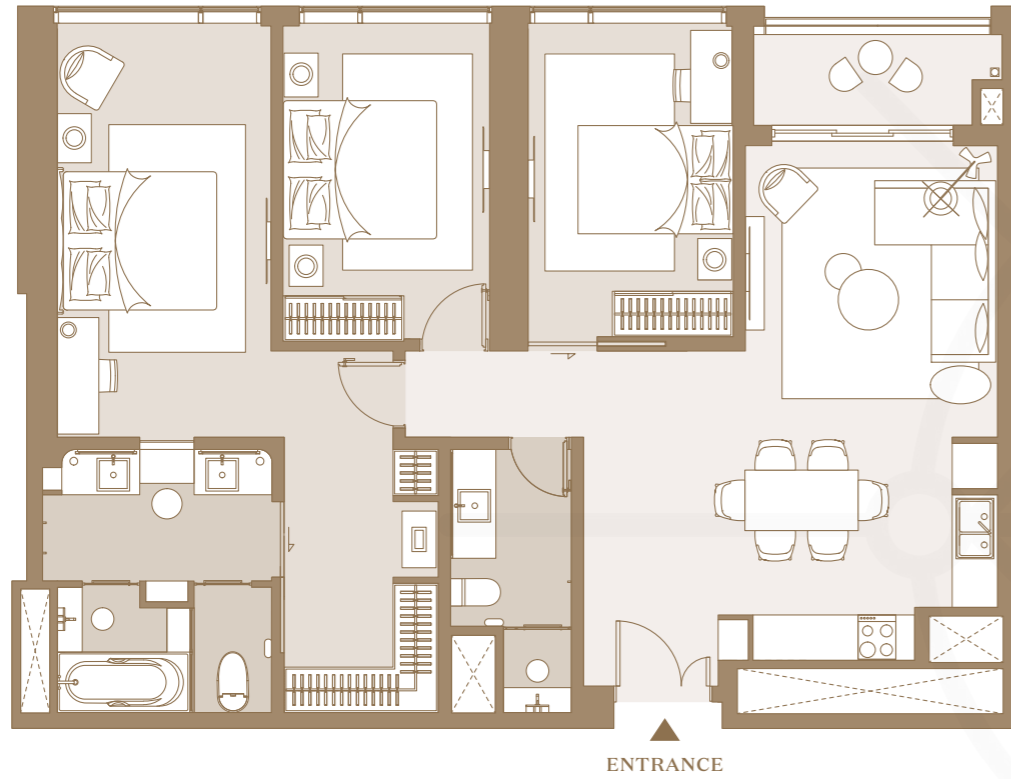
UNIT	NSA	GSA
J.05	108.95 - 110.57 m ²	121.82 m ²

◆ Living / Dining / Kitchen / Terrace ◆ Bedroom ◆ Bathroom

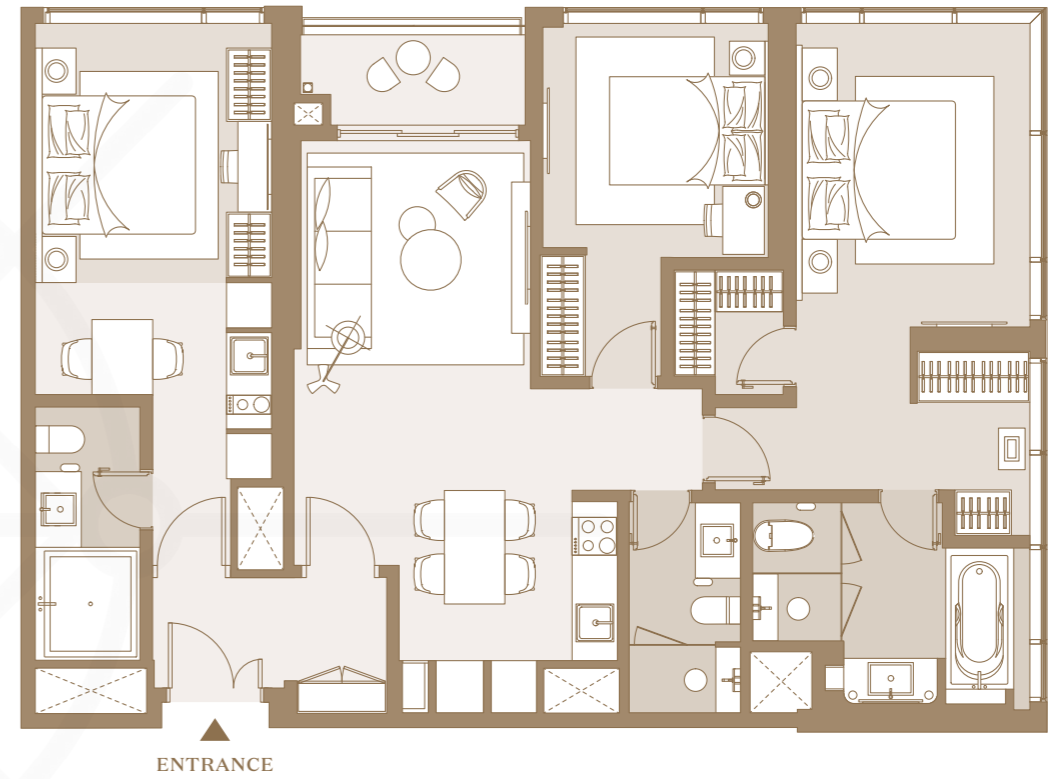
Disclaimer: Whilst every care has been taken to ensure accuracy in the preparation of the information contained herein, no warranties whatsoever are given or legal representation provided in respect thereon. The developer reserves the right to modify information of the development or any part thereof as may be approved or required by the relevant authorities. Name and code of unit in this document are for advertisement. The official name and code of unit will be as per the Sales and Purchase Agreement.

*Note: Final usable area to be verified by surveyor.
- Net Saleable Area (NSA)
- Gross Saleable Area (GSA)*

LEGACY PREMIER SUITE

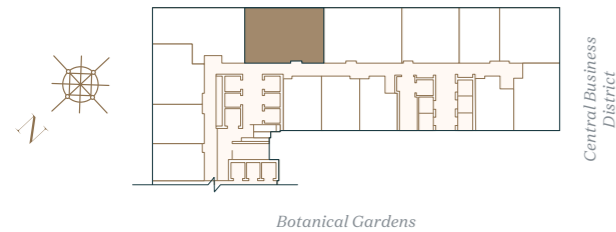


LEGACY FAMILY SUITE



Level 2 to 44

Saigon River



UNIT	NSA	GSA
J.06	107.10 – 108.22 m ²	117.03 m ²

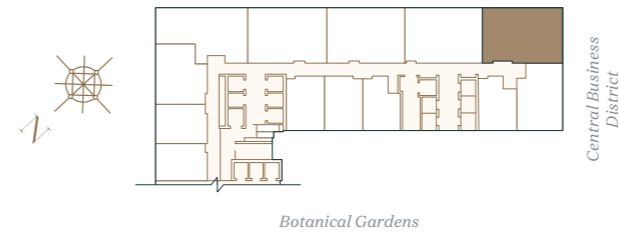
Living / Dining / Kitchen / Terrace
 Bedroom
 Bathroom

Disclaimer: Whilst every care has been taken to ensure accuracy in the preparation of the information contained herein, no warranties whatsoever are given or legal representation provided in respect thereon. The developer reserves the right to modify information of the development or any part thereof as may be approved or required by the relevant authorities. Name and code of unit in this document are for advertisement. The official name and code of unit will be as per the Sales and Purchase Agreement.

*Note: Final usable area to be verified by surveyor.
 – Net Saleable Area (NSA)
 – Gross Saleable Area (GSA)*

Level 33 to 44

Saigon River



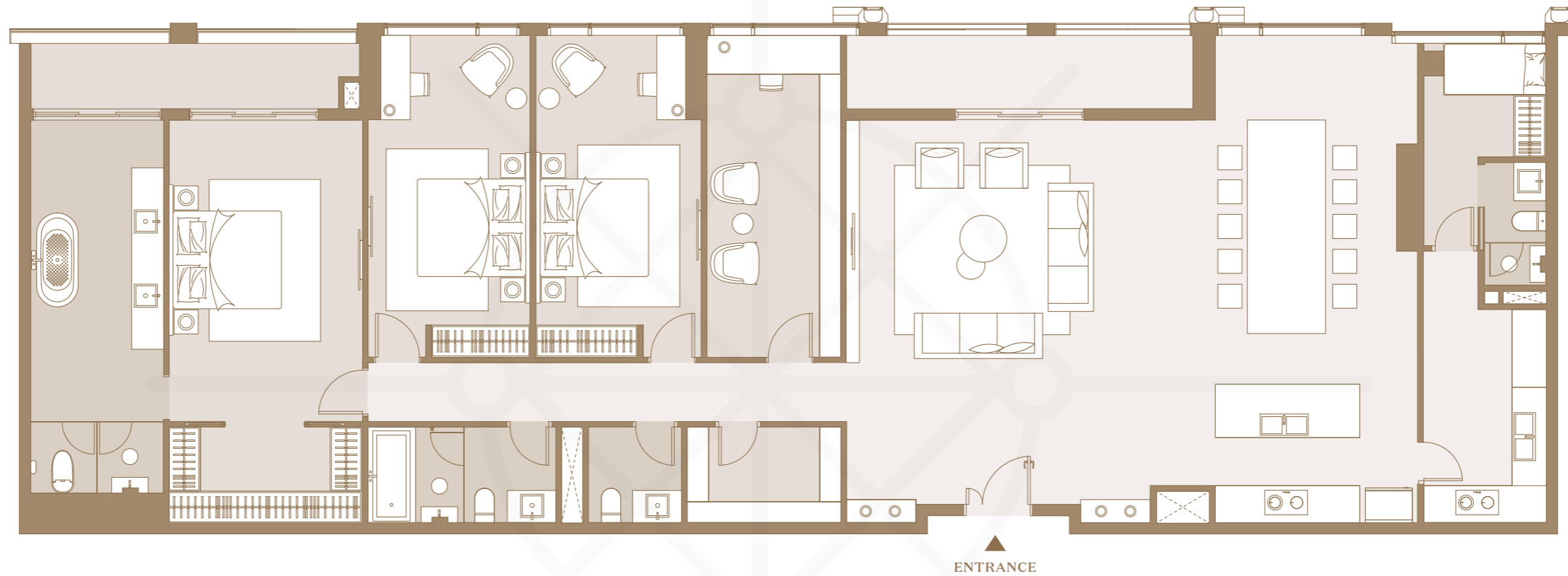
UNIT	NSA	GSA
J.09	111.30 – 111.78 m ²	124.16 m ²

Living / Dining / Kitchen / Terrace
 Bedroom
 Bathroom

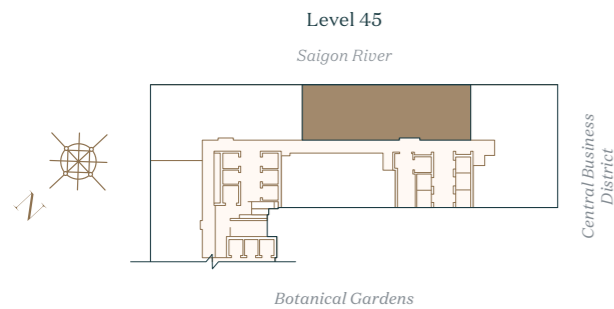
Disclaimer: Whilst every care has been taken to ensure accuracy in the preparation of the information contained herein, no warranties whatsoever are given or legal representation provided in respect thereon. The developer reserves the right to modify information of the development or any part thereof as may be approved or required by the relevant authorities. Name and code of unit in this document are for advertisement. The official name and code of unit will be as per the Sales and Purchase Agreement.

*Note: Final usable area to be verified by surveyor.
 – Net Saleable Area (NSA)
 – Gross Saleable Area (GSA)*

LEGACY PRESIDENTIAL SUITE



ENTRANCE



UNIT	NSA	GSA
J.03	249.76 m ²	265.86 m ²

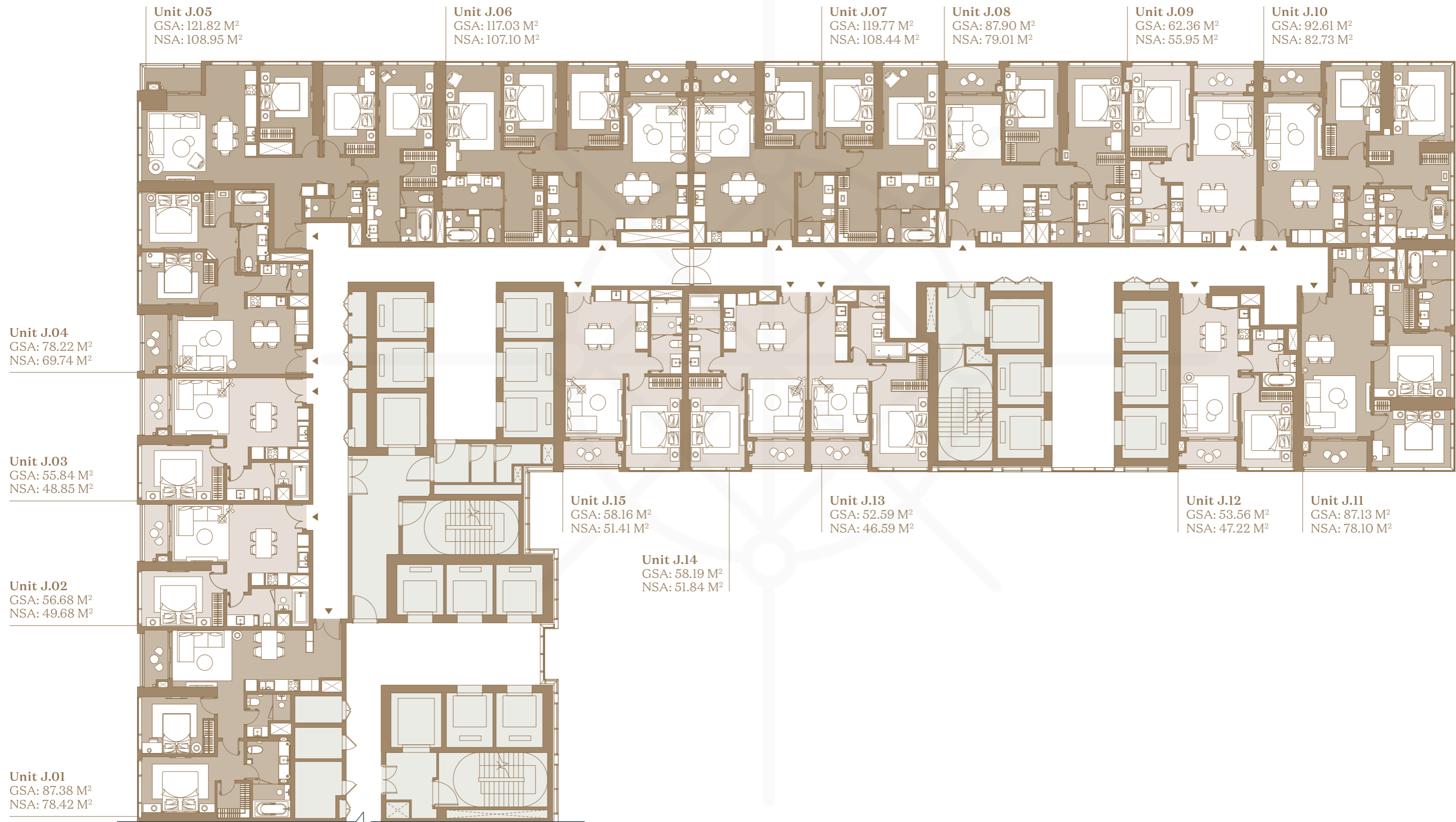
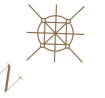
Living / Dining / Kitchen / Terrace
 Bedroom
 Bathroom

Disclaimer: Whilst every care has been taken to ensure accuracy in the preparation of the information contained herein, no warranties whatsoever are given or legal representation provided in respect thereon. The developer reserves the right to modify information of the development or any part thereof as may be approved or required by the relevant authorities. Name and code of unit in this document are for advertisement. The official name and code of unit will be as per the Sales and Purchase Agreement.

*Note: Final usable area to be verified by surveyor.
 - Net Saleable Area (NSA)
 - Gross Saleable Area (GSA)*

LEGACY SEA TYPICAL FLOOR PLAN

LEVEL 3 TO 8, 10 TO 11



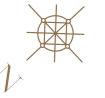
- 1 Bedroom Legacy Superior Suite
- 2 Bedroom Legacy Executive Suite
- 3 Bedroom Legacy Premier Suite
- Dual-key Room Legacy Family Suite

Disclaimer: Whilst every care has been taken to ensure accuracy in the preparation of the information contained herein, no warranties whatsoever are given or legal representation provided in respect thereon. The developer reserves the right to modify information of the development or any part thereof as may be approved or required by the relevant authorities. Name and code of unit in this document are for advertisement. The official name and code of unit will be as per the Sales and Purchase Agreement.

*Note: Final usable area to be verified by surveyor.
 - Net Saleable Area (NSA)
 - Gross Saleable Area (GSA)*

LEGACY SEA TYPICAL FLOOR PLAN

LEVEL 12 TO 21, 23 TO 26, 29 TO 31



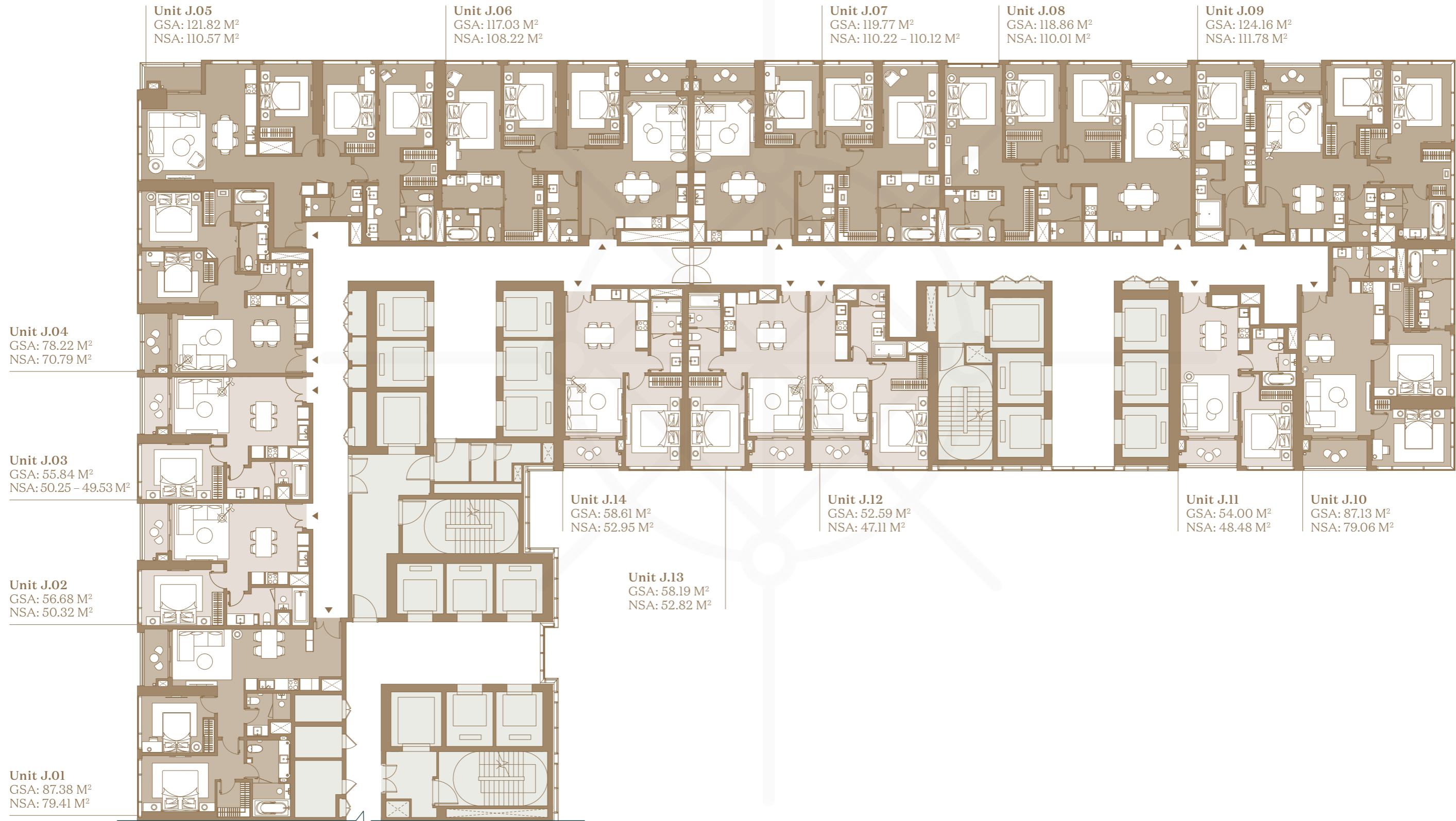
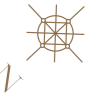
- 1 Bedroom Legacy Superior Suite
- 2 Bedroom Legacy Executive Suite
- 3 Bedroom Legacy Premier Suite
- Dual-key Room Legacy Family Suite

Disclaimer: Whilst every care has been taken to ensure accuracy in the preparation of the information contained herein, no warranties whatsoever are given or legal representation provided in respect thereon. The developer reserves the right to modify information of the development or any part thereof as may be approved or required by the relevant authorities. Name and code of unit in this document are for advertisement. The official name and code of unit will be as per the Sales and Purchase Agreement.

*Note: Final usable area to be verified by surveyor.
 - Net Saleable Area (NSA)
 - Gross Saleable Area (GSA)*

LEGACY SEA TYPICAL FLOOR PLAN

LEVEL 33 TO 35



- 1 Bedroom Legacy Superior Suite
- 2 Bedroom Legacy Executive Suite
- 3 Bedroom Legacy Premier Suite
- Dual-key Room Legacy Family Suite

Disclaimer: Whilst every care has been taken to ensure accuracy in the preparation of the information contained herein, no warranties whatsoever are given or legal representation provided in respect thereon. The developer reserves the right to modify information of the development or any part thereof as may be approved or required by the relevant authorities. Name and code of unit in this document are for advertisement. The official name and code of unit will be as per the Sales and Purchase Agreement.

*Note: Final usable area to be verified by surveyor.
- Net Saleable Area (NSA)
- Gross Saleable Area (GSA)*



SPECIFICATIONS

Outstanding to the last detail, every residence at Legacy Sea is designed to the meticulous standards of JW Marriott. Using premium branded appliances and fixtures, fine interiors are crafted for a lifetime of opulent comfort.

Floor Finishes	<ul style="list-style-type: none"> • Bathroom – marble • Kitchen / Dining – granite
Wall Finishes	Bathroom – marble
Doors	Digital door lock – access type: key pass, fingerprint lock, mechanical key, card
Sanitary Ware	<ul style="list-style-type: none"> • Wash basin • Water closet • Shower mixer • Wash basin faucets • Toilet fixtures: towel bar, toilet-paper holder, bidet sprayer
Air Conditioner	Centralised chiller system
Kitchen	<ul style="list-style-type: none"> • Induction stove with three hobs • Single/double stainless-steel sink • Sink faucet (with mixer tap) with automatic sensor and extendable hose • Kitchen hood • Oven

Note: Preliminary specifications only. The full specifications list will be detailed in the Sales and Purchase Agreement.







🏠 No.2, Ton Duc Thang Street, Ben Nghe Ward, District 1, Ho Chi Minh City, Vietnam

☎ (028) 39 159 159 ✉ grandmarina@masterisehomes.com 🌐 masterisehomes.com/grand-marina-saigon 📘 facebook.com/OfficialGrandMarinaSaigon

Disclaimer: Whilst every care has been taken to ensure accuracy in the preparation of the information contained herein, no warranties whatsoever are given or legal representation provided in respect thereon. The developer reserves the right to modify information of the development or any part thereof as may be approved or required by the relevant authorities.

The JW Marriott Residences, Grand Marina, Saigon are not owned, developed or sold by Marriott International, Inc. or its affiliates ("Marriott"). The JW Marriott marks are used under a license from Marriott, which has not confirmed the accuracy of any of the statements or representations made herein. Masterise Homes and its affiliates are responsible for the accuracy of any of the images, statements or representations made herein.